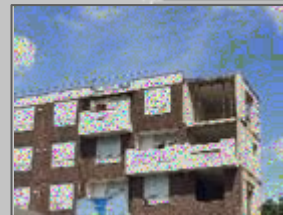
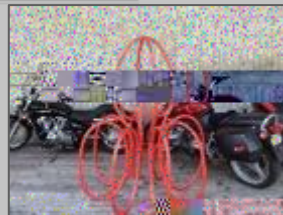


! "#\$%&' (#\$&) * \$+ , # \$ - . \$ + / 0 &) \$ 1 # & ' 2 " \$ 3) * 4 5 & 2 - / \$! - - ' , \$ 4) \$ + / 0 &) \$ 6 ' &)) 4) 7 \$ 6 - ' 4 5 8 \$ &) * \$ 9 # 5 4 , 4 -) : ; & < 4) 7

! "# \$ % & ' \$ " () * +

, - . " / 0 ' 1 (/ 1 2 % & / (3 4 5 ' 6 7 8 " # % 9 8 0 ' " 1) * 9 / 4 : ' 6 (# " % ; ' < < " / < 8 \$ \$) * % & / (3 4 & 8 - # % = ' # > ' \$ 1 (\$?

@ \$ ' 0 " / 1 ' A B % C (# # " D " % E (\$ F (\$) * % G - ' # F ' \$ D % H " 1 " 8 / 6 7 % I 1 A 8 J # ' 1 7 < " \$ A + * % E (\$ F (\$ % , 6 7 ((# % (3 % ! B D " " \$ " % 8 \$ F % K / (. ' 6 8 # % 5 " F ' 6 ' \$ " ?



Presentation overview

0 ! 123453


0 * 464789 : % 7 ; ; 8179 :

0 ! : 7879348 < 63 < 96 % 1 = % > 8 ? 72 % : 47 @ 3 : % < 2 A < 97 3 1 8 % 3 1 1 @ 6
B . C 6 3 4 D 7 3 < 9 % 8 4 E < 4 F % ; 7 8 3 % G H

0 + I # % 3 1 1 @ 6 % < 2 % 3 : 4 % ; 1 @ < 9 C % 7 2 A % A 4 9 < 6 < 1 2 J D 7 K < 2 L % ; 8 1 9 4 6 6
B . C 6 3 4 D 7 3 < 9 % 8 4 E < 4 F % ; 7 8 3 % M H

0 ! 7 6 4 % 6 3 > A C % 4 5 7 D ; @ 4 N % . 1 > 3 : F 7 8 K 0 % " 1 2 A 1 2

0 * 4 = @ 4 9 3 < 1 2 6 % 7 2 A % 2 4 5 3 % 6 3 4 ; 6



Context: Defining urban health indicator (UHI) tools

U H I (UHI) T

01%2344526738%39% : < < 1=>% < 51 : ; =5 % 1?3 ; 6%6@5%A@> :7214% ; =?18%58B7=38 < 586C : %
 2386=7? ; 6738%63%@ ; < 18%@5146@%18D%E544?578FC%

GH7853%56% 14IJ%KLMNJ%AI%KO%

E

I		E -	E -	O	S
P %39%A53A45%E@3%47B5%E76@78%1%@149					

About the San Francisco Indicator Project

The San Francisco Indicator Project is a neighborhood-level data system that measures how San Francisco performs in a range of areas of a healthy, equitable community. The goal of this project is to support collaboration, planning, and action to improve the social and physical environment.

THE SAN FRANCISCO INDICATOR PROJECT

Environment

Transportation

Community

Economic

Education

Housing

Economic

Health

2016.6.28 Tree canopy

Descriptive title

Geographic unit of analysis

San Francisco Tree Canopy (2013)



Walk Score

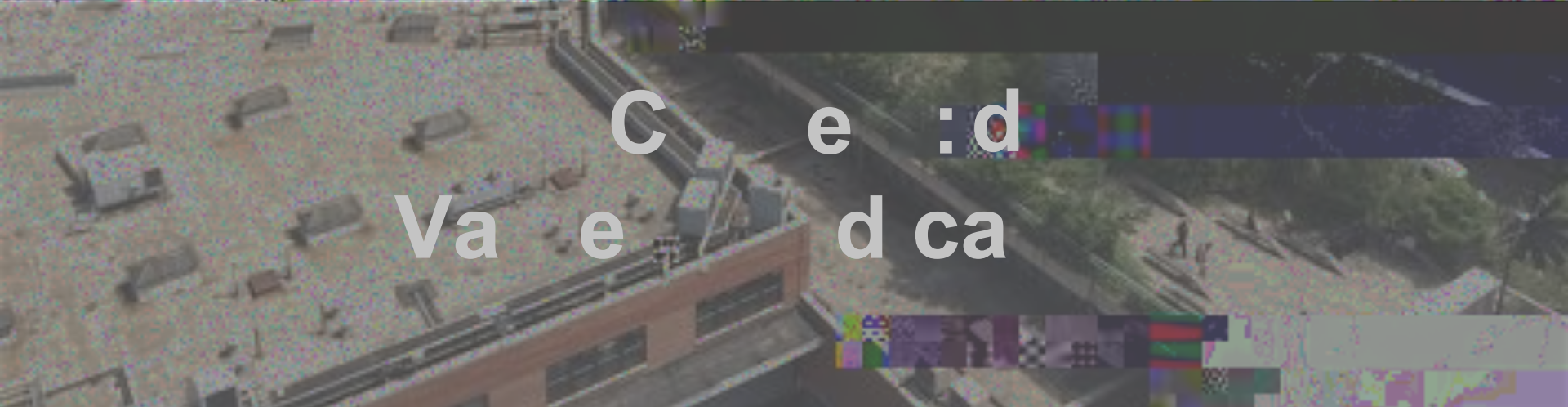
727-791 Northeast North

Map of 727-791 Northeast North

Committee

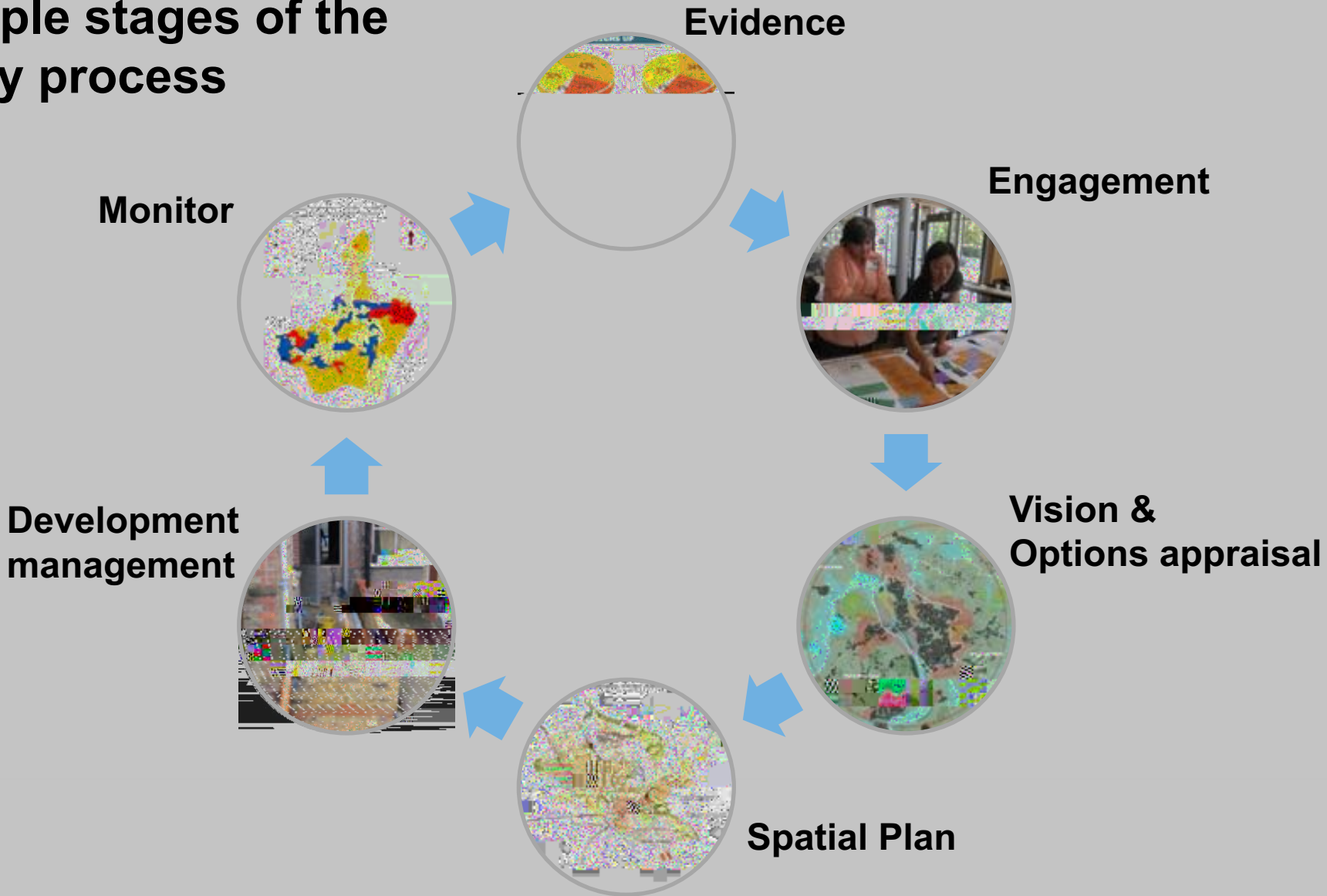
Map navigation: Home, Favorites, Nearby, View Routes

86	Very Walkable
80	Excellent Transit
78	Very Bikeable



Ca
e : d
Va e d ca

Potential value at multiple stages of the policy process





Proposed benefits of indicators

inform policies and decisions

monitor policy impact over time

compare performance with local, regional, national or international levels

determine targets for improvement

show performance publicly (accountability/performance management)

support funding bids or allocations

serve as an 'early warning' of potential issues

involve the public in prioritisation and definition of policy goals



Con e :
Indica or in he policed proce

CLICK TO EDIT RUNNING TITLE STYLE

Research aim and objectives

Aim: (012345%637%849 : ; %65 : 2<6%= ; >=? : <34@% : 45%8@5>%<3%143A3<5%65 : 2<6%= ; %849 : ; %12 : ; ; = ; B%132=?C% : ; >%>5?=@=3 ; DA : E= ; BF%%

Objectives:

GF

Methodology – Mixed methods

Explanatory sequential design

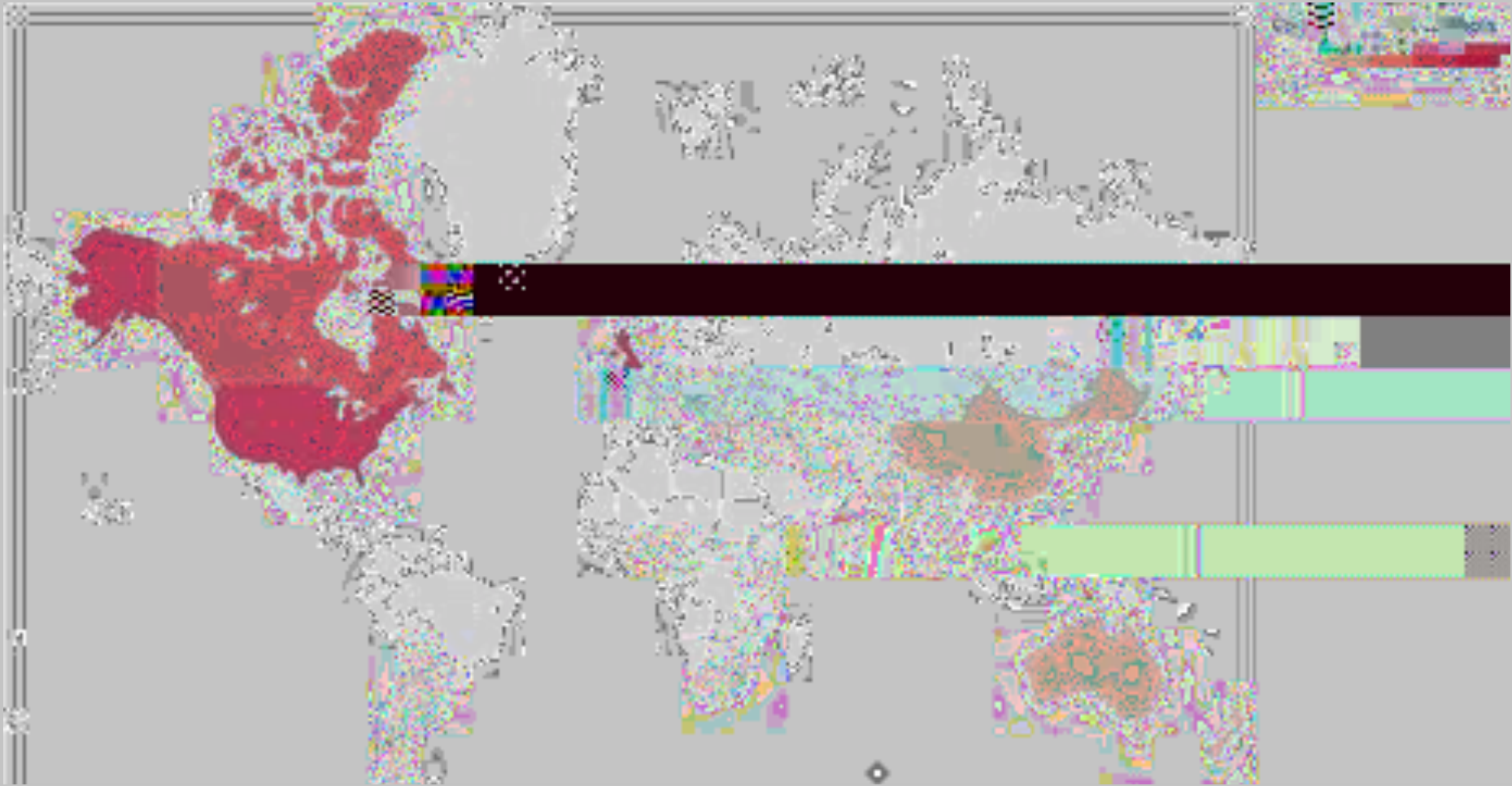


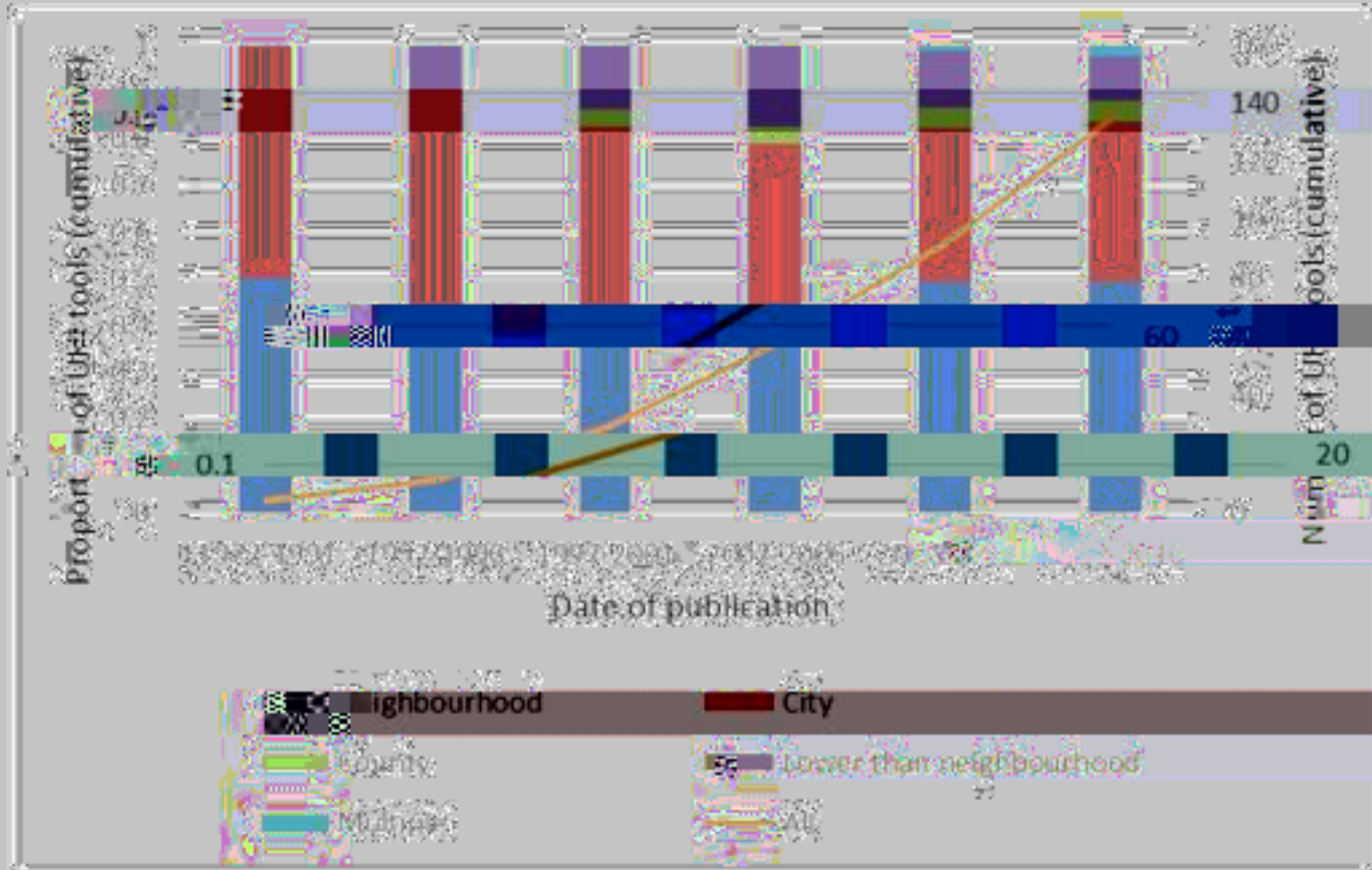


CLICK TO EDIT RUNNING TITLE STYLE

CLICK TO EDIT RUNNING TITLE STYLE

! " # \$ % & ' () * + (, - . \$ /) 0 1 2 (- 3 & \$ - 3 3 , 4 \$ 5 6 7 7 8 \$ 1) 0 1 2 (- 3 & 4 9



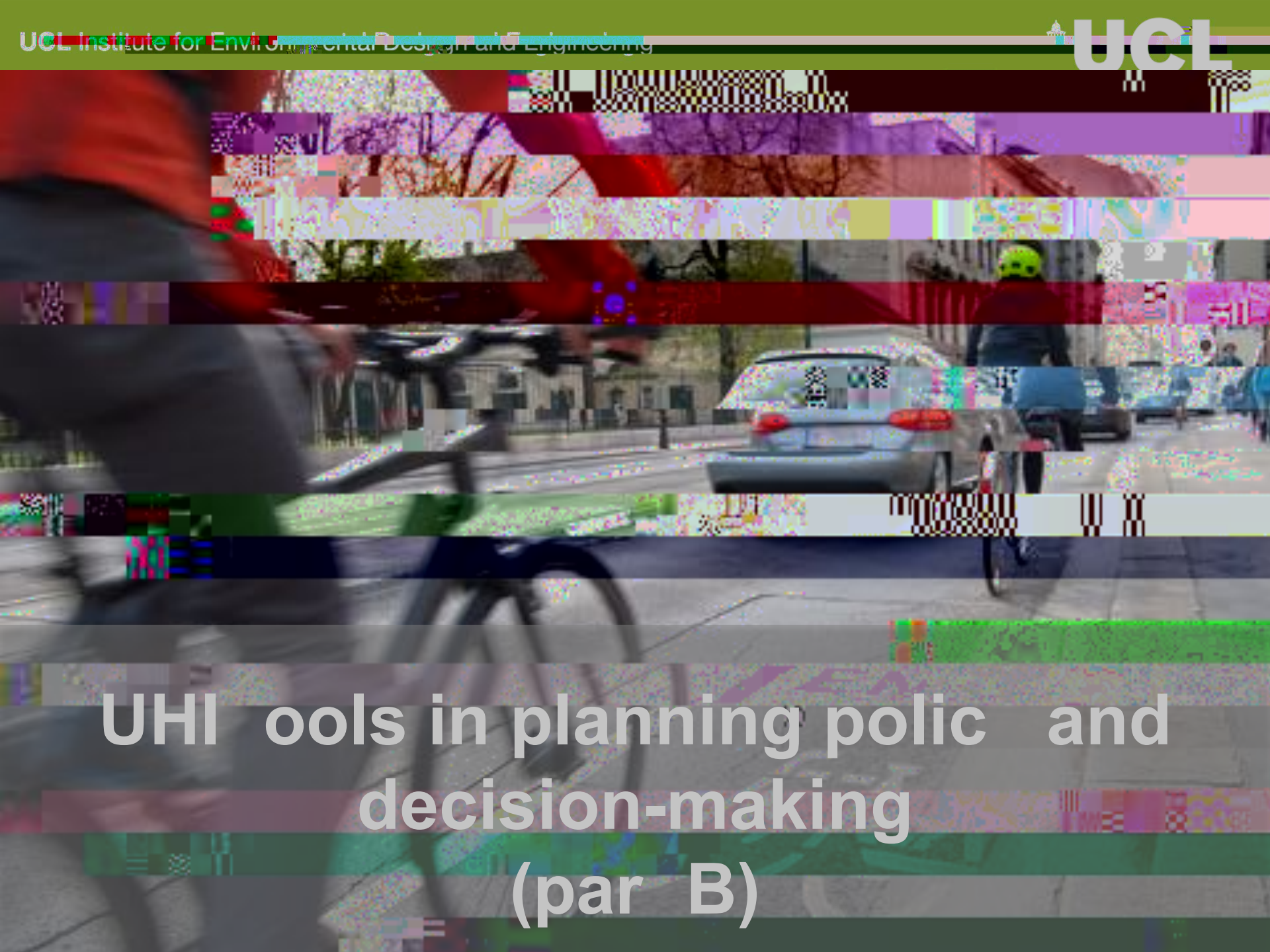


C a UHI b a a ca c a d c a
 UHI . N.B. M da a 9/145 UHI : 7 dd a da
 b ca a d 2 dd a a ca .

Complexity in the UHI tool methodologies

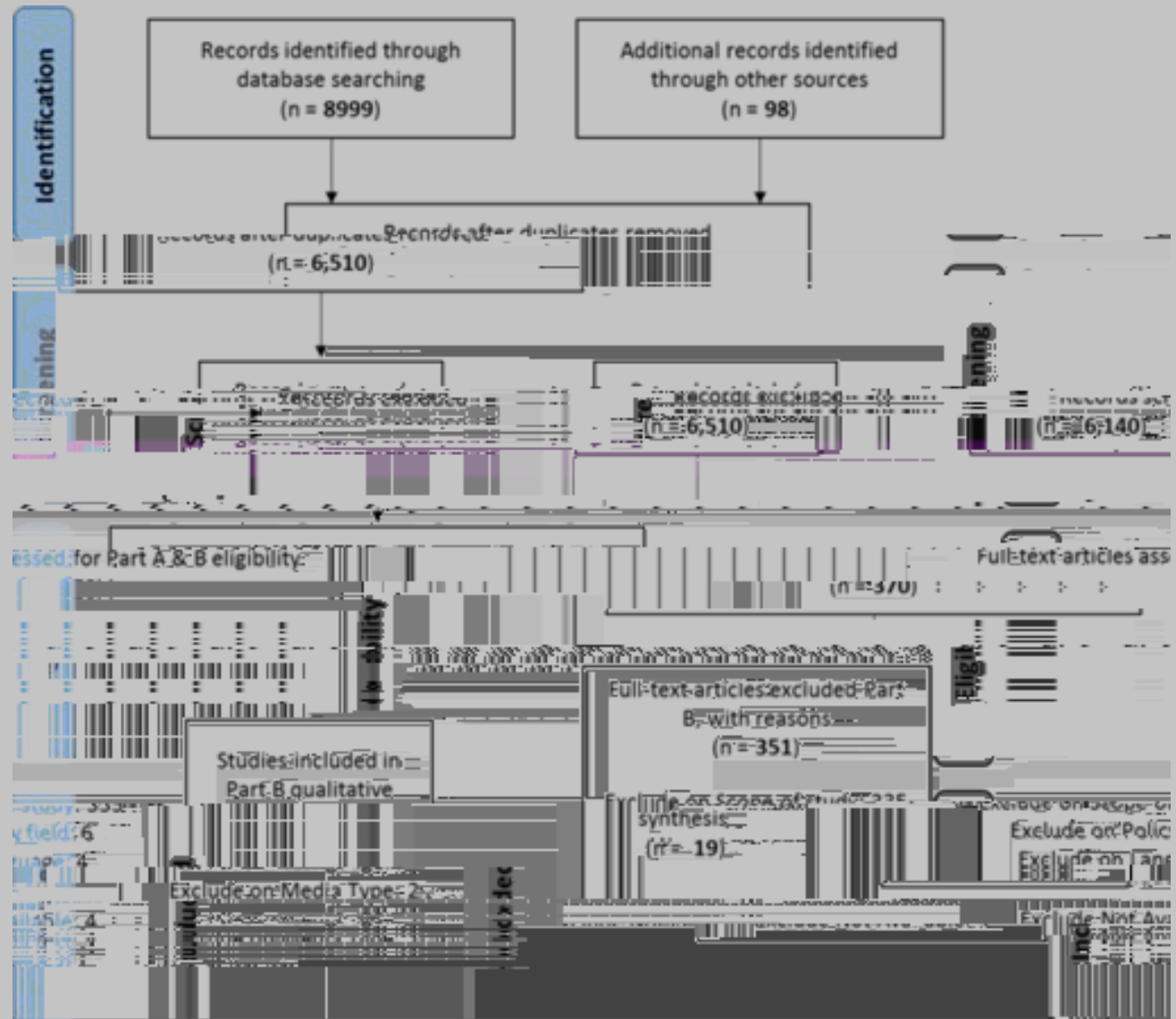


I

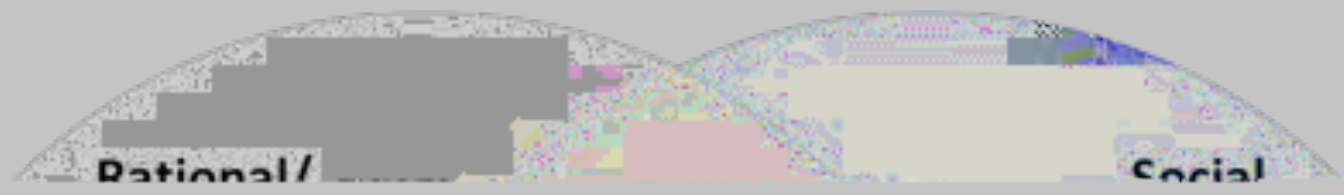


**UHI tools in planning policy and
decision-making
(part B)**

Systematic Review Part B – Early Results



P	Y	A	M	R
,	2015			
,	2014			
,				





Case study: Southwark, London



Image: Southwark Council

0



!"#\$%&'()*+,-./:;<=>@A B C D E F G H I J K L M N O P Q R S T U V W X Y Z [\] ^ _ ` { | } ~ ¡ ¢ £ ¤ ¥ ¦ § ¨ © ª « ¬ ® ¯ ° ± ² ³ ´ µ ¶ · ¸ ¹ º » ¼ ½ ¾ ¿ À Á Â Ã Ä Å Æ Ç È É Ê Ë Ì Í Î Ï Ñ Ò Ó Ô Õ Ö × Ø Ù Ú Û Ü Ý Þ ß à á â ã ä å æ ç è é ê ë ì í î ï ð ñ ò ó ô õ ö ÷ ø ù ú û ü ý þ ÿ

What do you think?



References

! " # \$ % ' (!) * + \$

