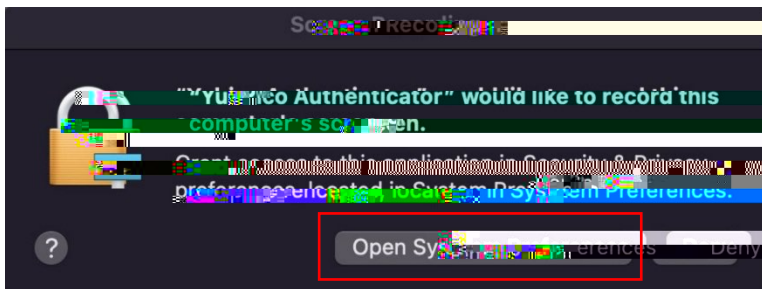
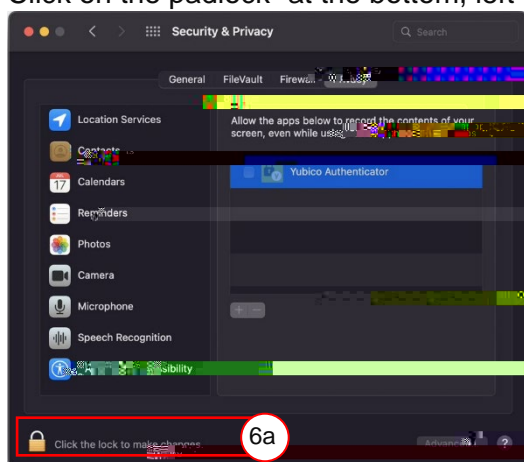


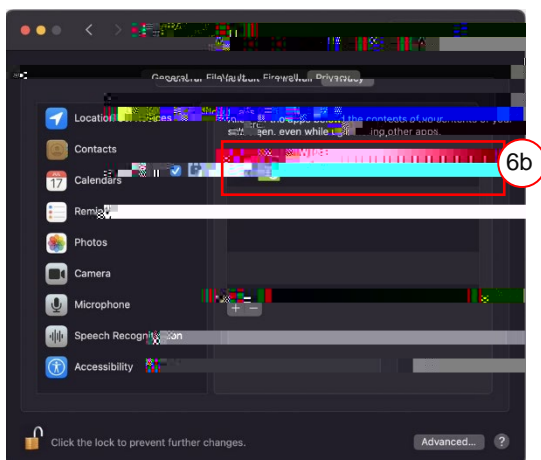
- Your computer will then prompt you to grant access to record the computer screen, select open system preferences.



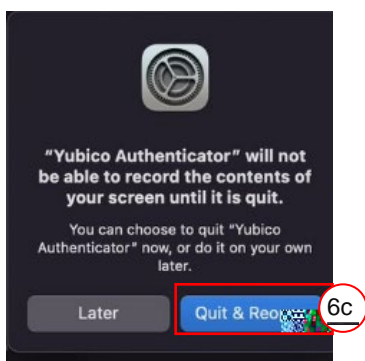
- Within the system preference screen,
 - Click on the padlock at the bottom, left of the screen



- Tick the Yubico Authenticator



- Allow for Yubico Authenticator to quit and reopen.



10. At the Set up your account

12. Once scanned,

- a) your account should appear in the [Yubico Authenticator window](#). Click Add account.
- b) In your [Authenticator app window](#), click Next.

13. Copy the detail:

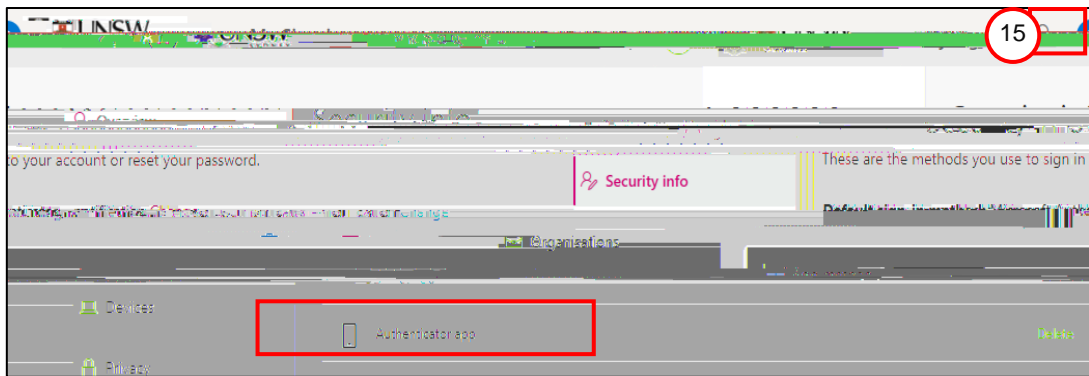
- a) In the [Yubico Authenticator](#) screen, copy the 6-digit number, and
- b) Paste (or manually enter) the 6-digit number into the Code section of your [Enter code](#) window.
- c) Click Next.

14. Finalise the process;

- a) In the Success window, click Done.
- b) In the Yubico Authenticator window, close the window by clicking the X.



15. You will be taken to your My Sign-ins window. The YubiKey set up is shown as Authenticator app. Click My Account and Sign out or simply close the browser window.



Congratulations, you have now successfully installed the (Yubico) Authenticator application and configured your YubiKey for use on this computer.

How to use the YubiKey

Follow these instructions to use a Yubico YubiKey to verify your log in to UNSW single sign-on applications on a computer which you have the Yubico Application installed.

A verification will be required every 60 days per device. You won't be asked to verify again unless;

- x you use another computer such as one on a Lectern,
- x you use a new browser,
- x you have cleared your internet browser cache/cookies,
- x you log in from a new location/country, or
- x our MFA solution considers that a risk-based event may have occurred.

