

U

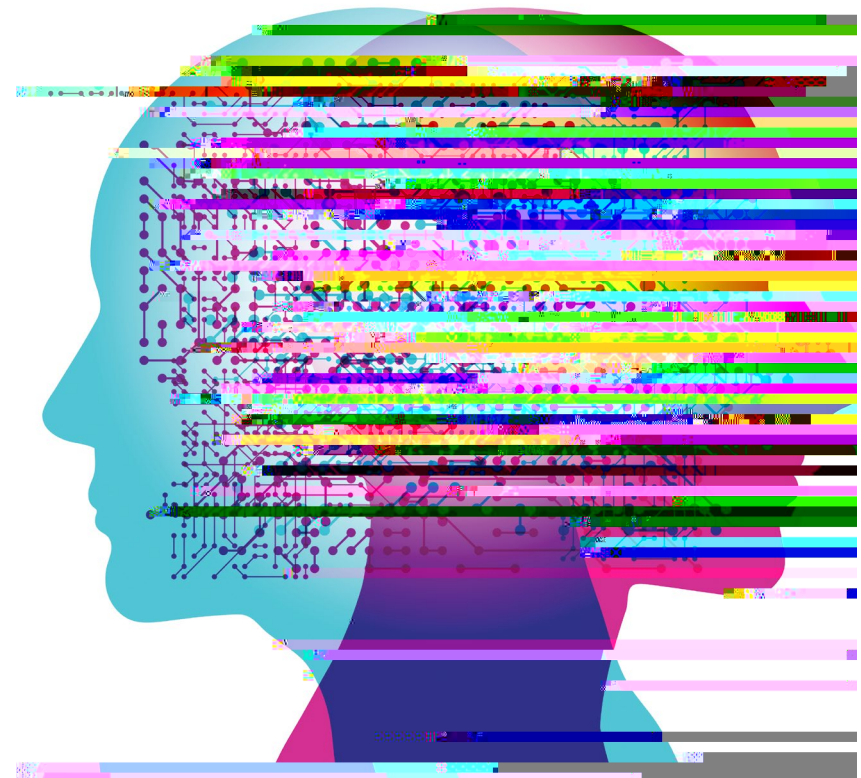


2

UNSW Higher Degree Research Graduate Attributes and Learning Outcomes

HDR candidates are considered to be scholars at the early stage of their research career, in transition to future employment and lifelong learning. This transition

by NSI We are making each of us a database



Aspirational learning goals for HDR graduates are encompassed by the fifth domain:

5. Social Engagement

- a. Developing social engagement through knowledge exchange, social enterprise, community building, equity and diversity actions, policy development, or other engagement activities appropriate to the discipline
- b. Developing understanding of university values including Diversity, Respect, Excellence, Collaboration, Innovation
- c. Developing personalised career strategy for future study or employment and life-long learning



