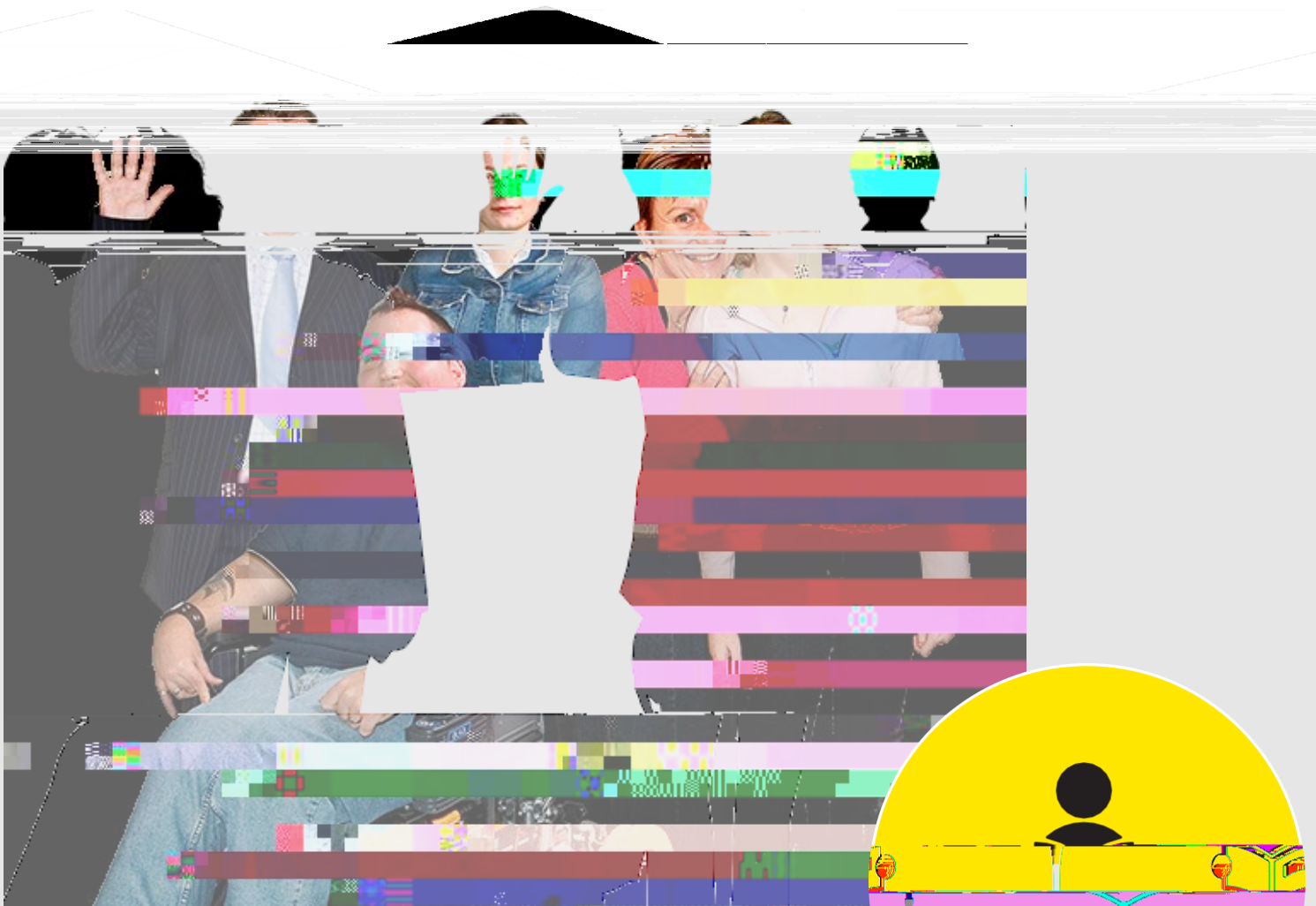




# The Hubs

Evaluation Plan of the Intellectual Disability and Mental Health Hubs

Report by Christiane Purcal, Leisel Savage and Karen R Fisher





## About the Hubs

The Hubs help services to better support people who have intellectual disability and mental illness.



The Hubs support people directly.

They talk about what people can do to have a better life.



The Hubs train health workers and give them advice.

There are 2 Hubs.

1 for **children and adolescents**



## What the research looks at



The research looks at what is good about the Hubs.



We want to find out how well the Hubs are working.



We want to find out if people get better support after using the Hubs.



We want to find out if health workers give better support to people after using the Hubs.



We want to find out how the Hubs can be better.

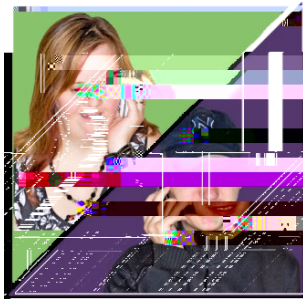


This type of research is called **evaluation.**

## How we do the research



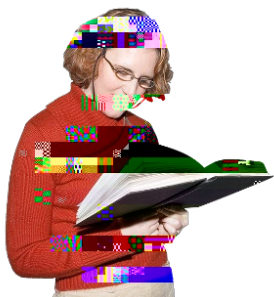
We listen to people's stories.



We do phone interviews.



We do surveys of health workers.



We look at other information about people who use the Hubs.



## **We talk to different people**

We talk to people who use the Hubs.

We talk to families and carers.

We also talk to

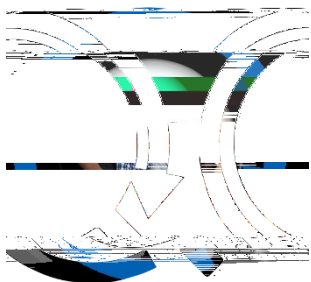
People who work for the Hubs.

Health workers who get advice  
from the Hubs.

The government.

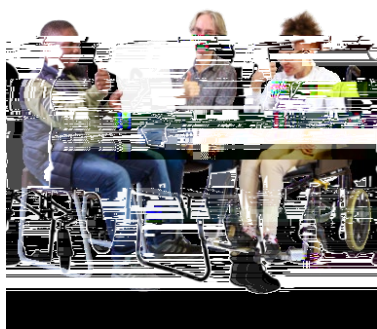


## Peer researchers

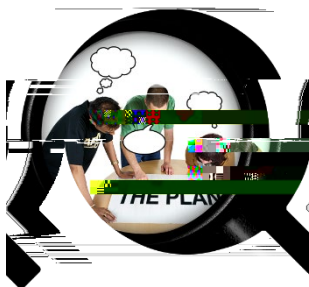


Some people with intellectual disability or mental illness help us do the research.

They are called **peer researchers**.



Peer researchers help us do a better job because they know what it is like to have intellectual disability or mental illness.



Peer researchers help plan and do the research.



Peer researchers give advice about how to include people in the research.

