

۲۲

۲۲

۲۲

۲۲

,*

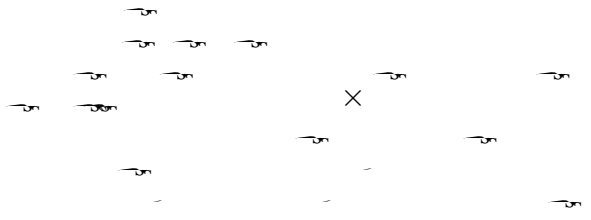
۲۲

Handwritten symbols, possibly a signature or initials, located in the upper left corner of the page.

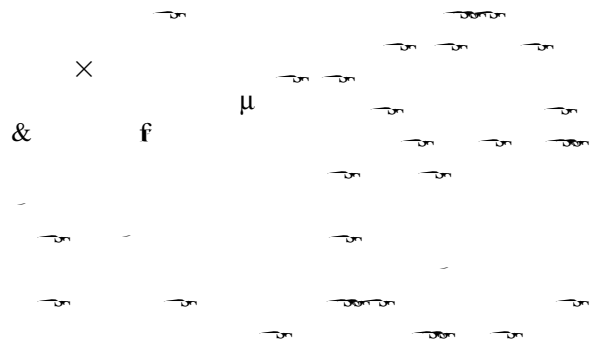
3
3
3

3
3
3

3.3. GC analysis

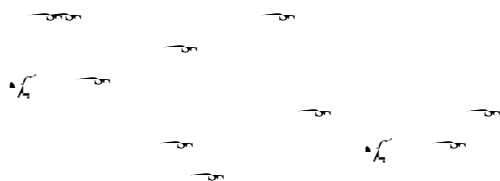


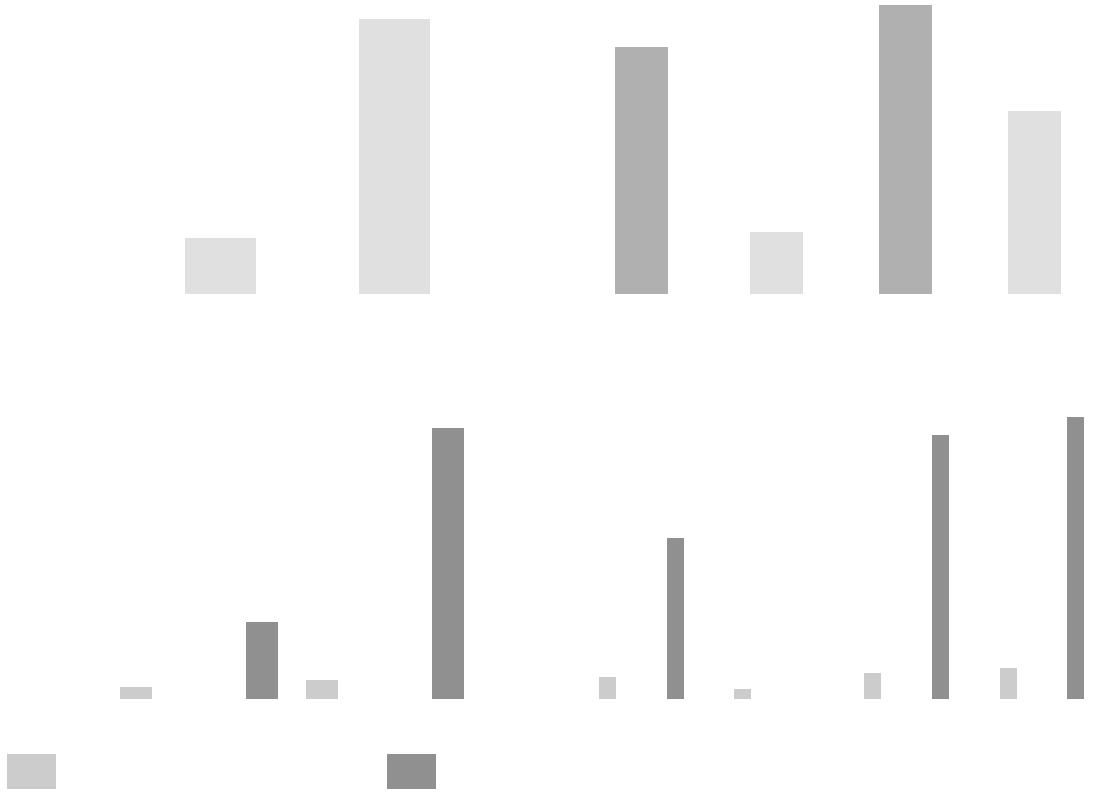
3.4. GC^MS analysis



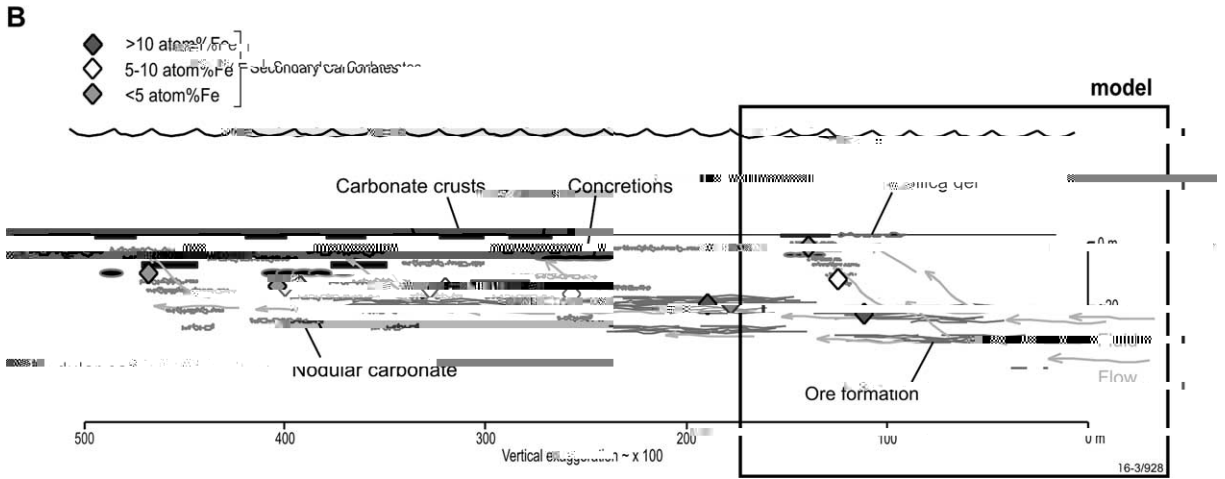
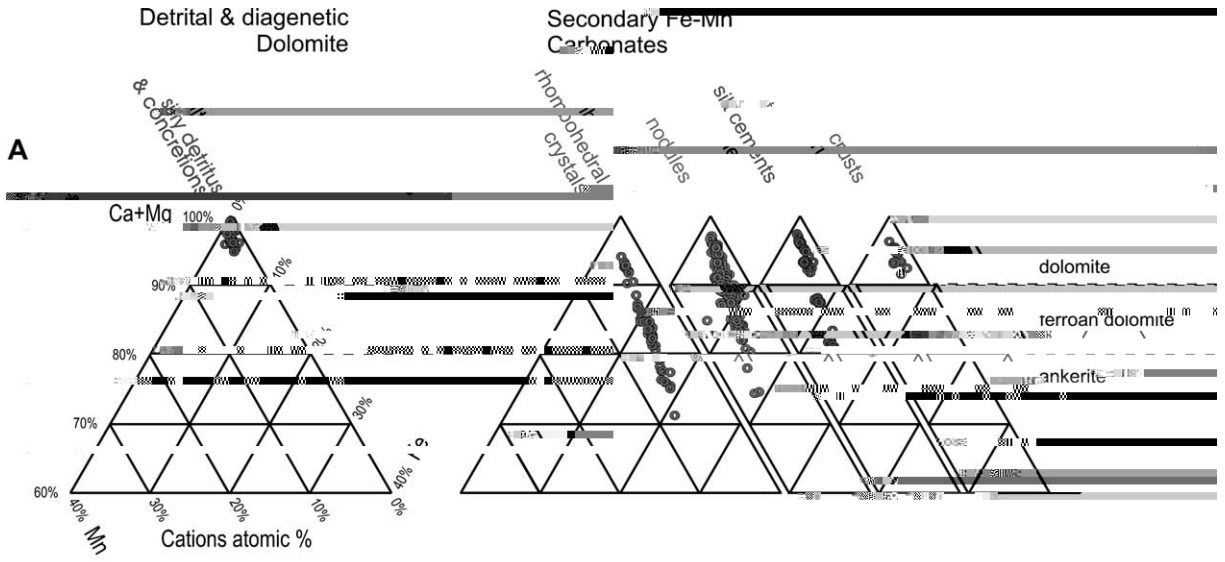
4. Results and discussion

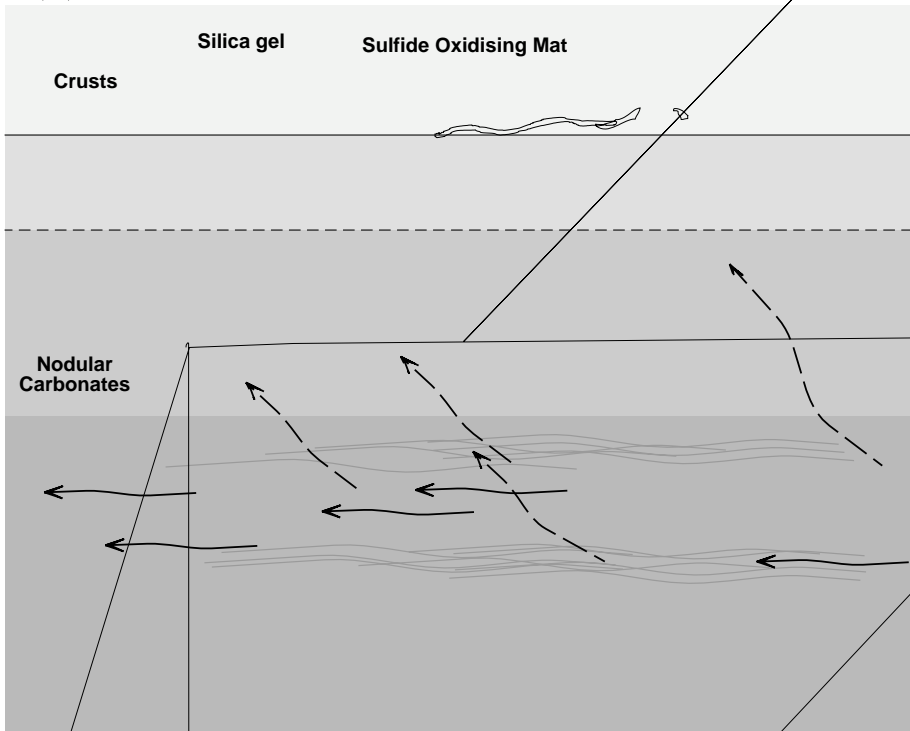
4.1. Aromatic hydrocarbons



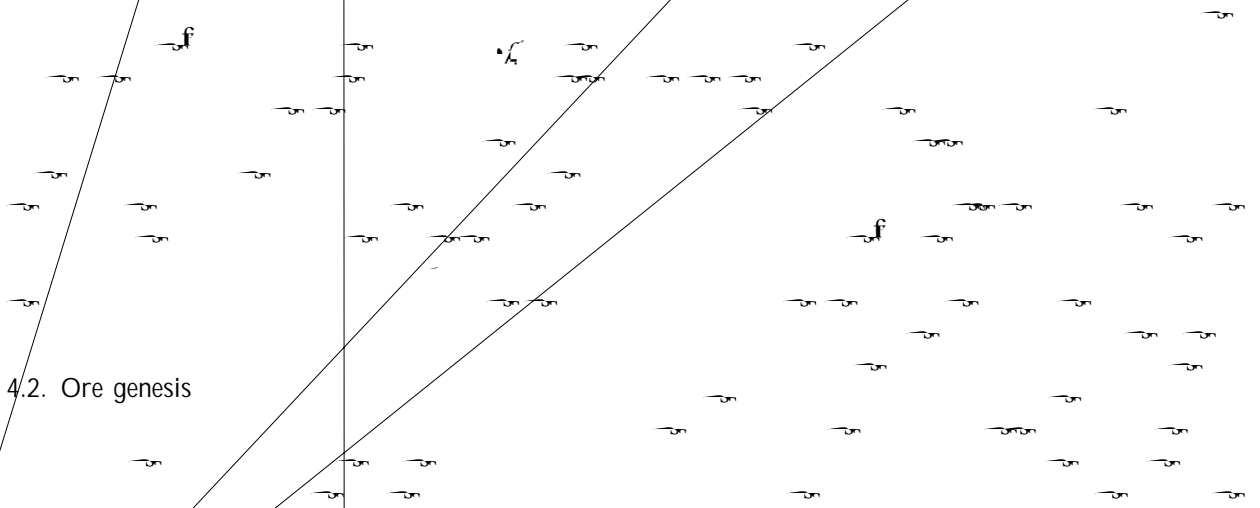


	#	#	#	#	#	#
f	f	f	f	f	f	f





4.2. Ore genesis



Handwritten scribbles and marks, possibly representing a signature or initials.