

Aerial Survey of Wetland Birds in Eastern Australia - October 2010 Annual Summary Report

**J.L. Porter and R.T. Kingsford
School of Biological, Earth and Environmental Sciences
University of New South Wales**

Results summary

1. There was significant flooding throughout the entire eastern Australia survey area. This included widespread flooding in the Murray-Darling

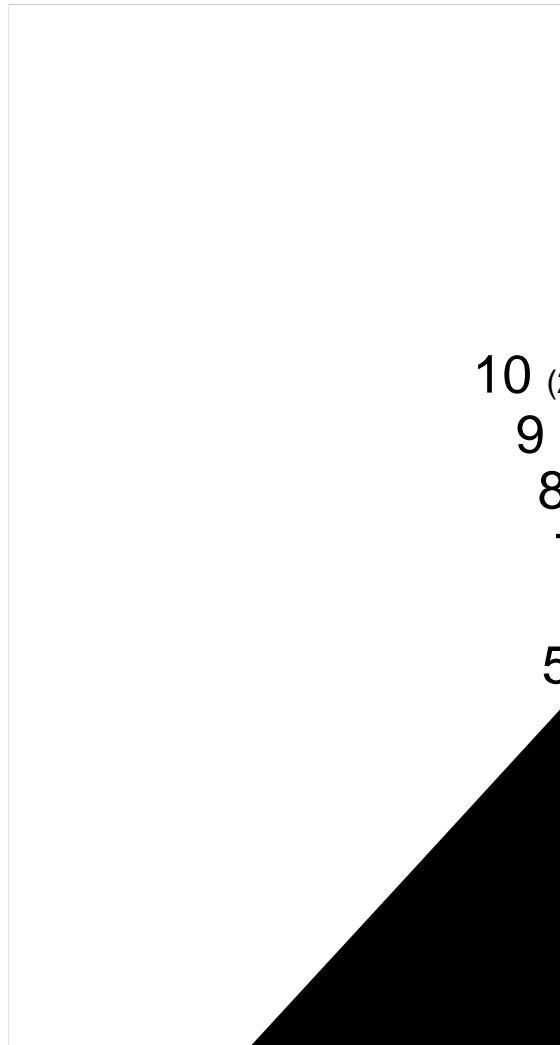
Result summary continued

7. The breeding index (all species combined) was the highest on record and was strongly concentrated (94%) in Band 3. Breeding species richness was also high, well above the long term average, the highest recorded since the mid 1990s

Acknowledgements

We thank Peter Morris and Terry Korn for acting as expert observers during the survey. We also thank Richard Byrne of NSW National Parks and Wildlife Service for piloting the aircraft. We also thank Jessica Armstrong, Louise Symes and Viyanna Leo for their help with data entry and verification.

- Full
- Partially full and drying
- Dry



- 10 (20°30'S)
- 9 (22°30'S)
- 8 (24°30'S)
- 7 (26°30'S)
- 6 (28°30'S)
- 5 (30°30'S)

Figure 2. Total wetland area

mean

Figure 3. Total waterbirds

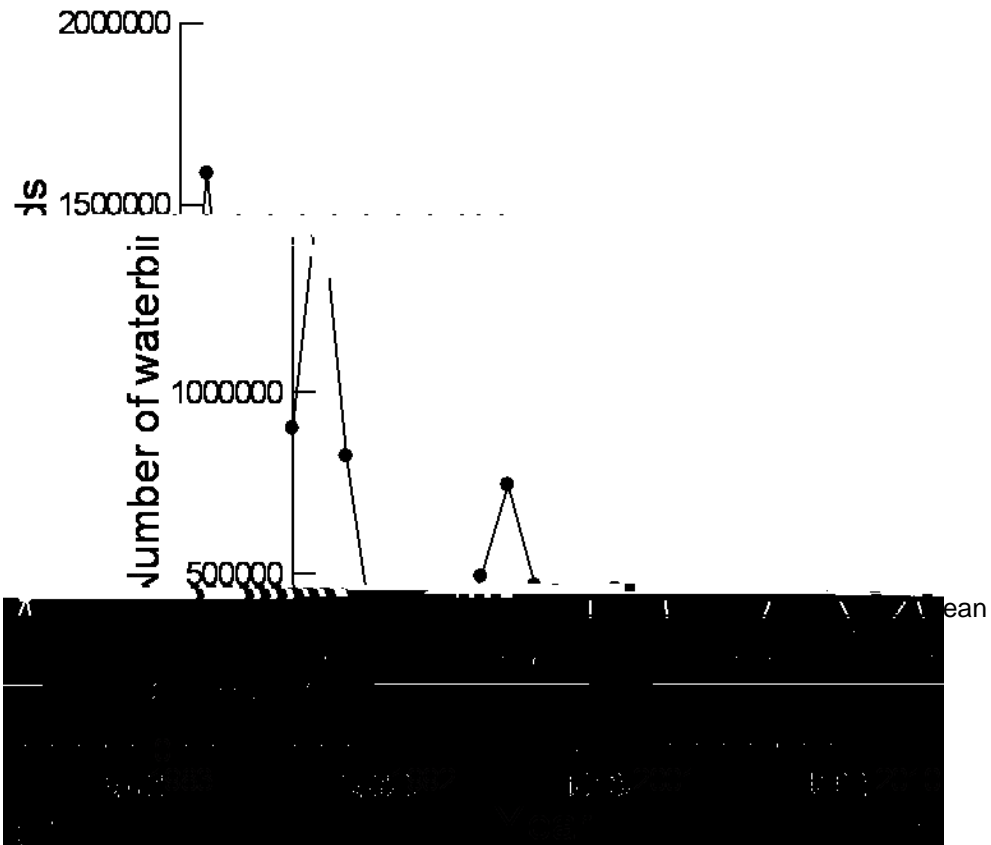


Figure 4. Band totals 2010



Scales vary on graph axes

Figure 5. Breeding index (all species)

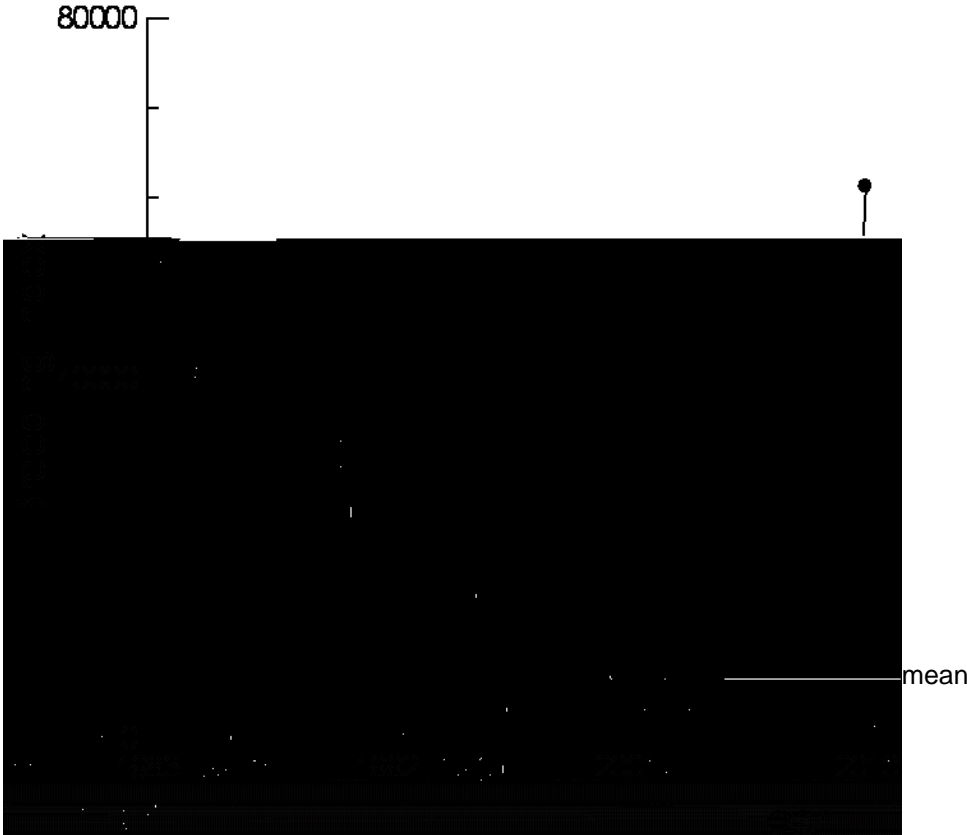
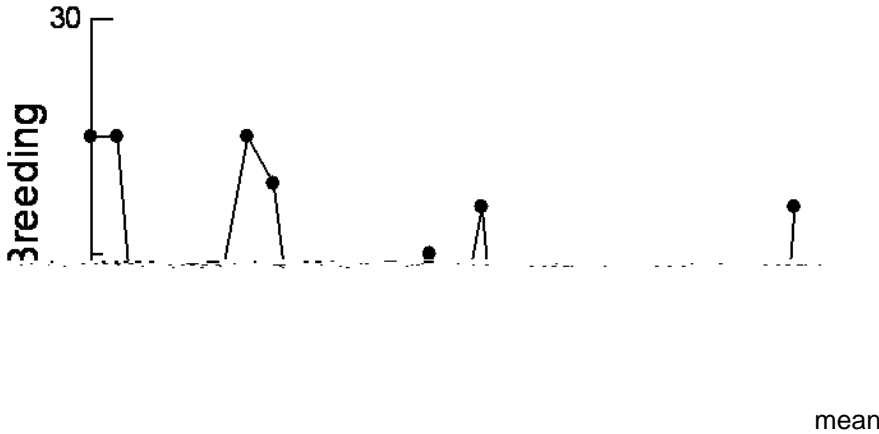
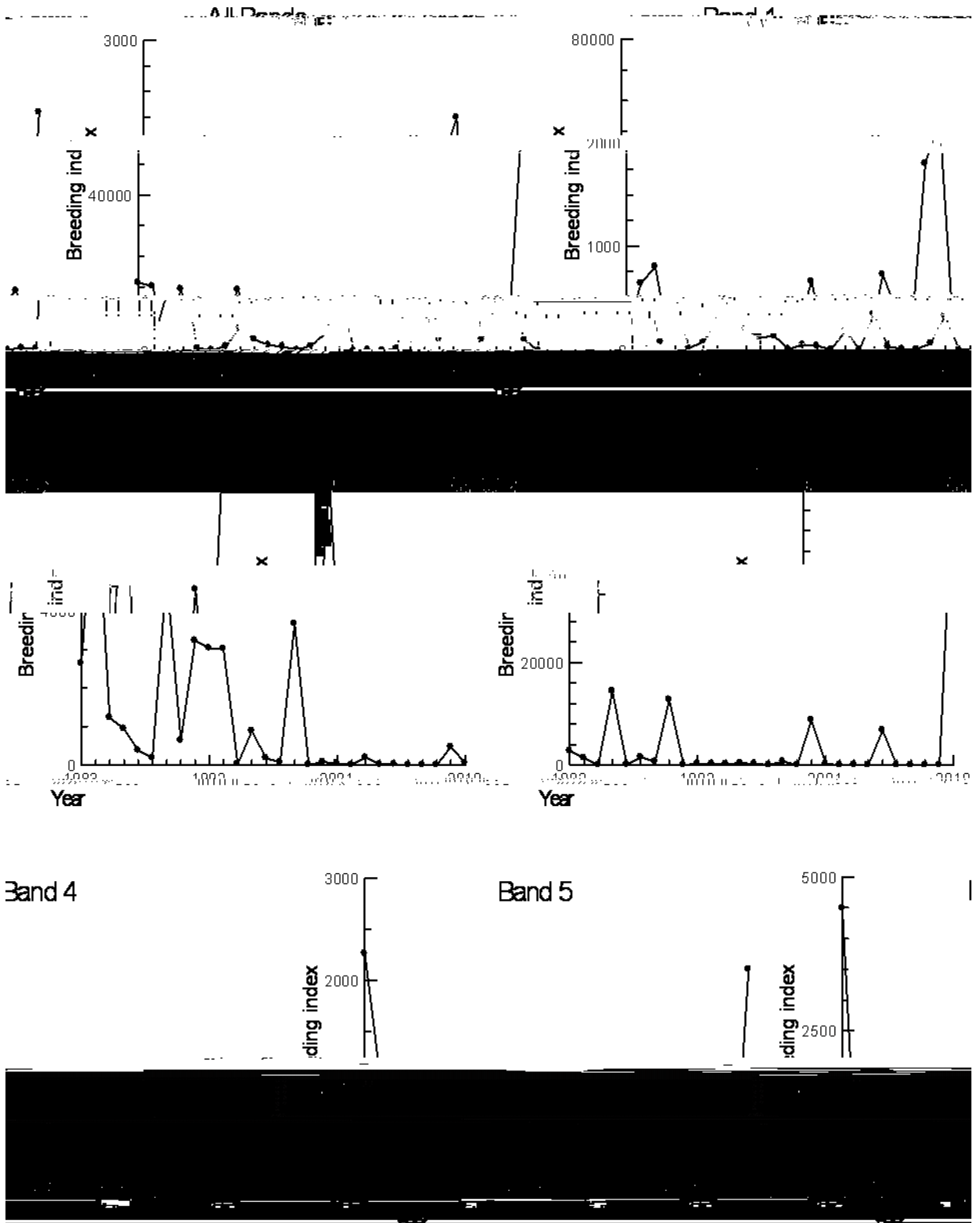


Figure 6. Number of species breeding



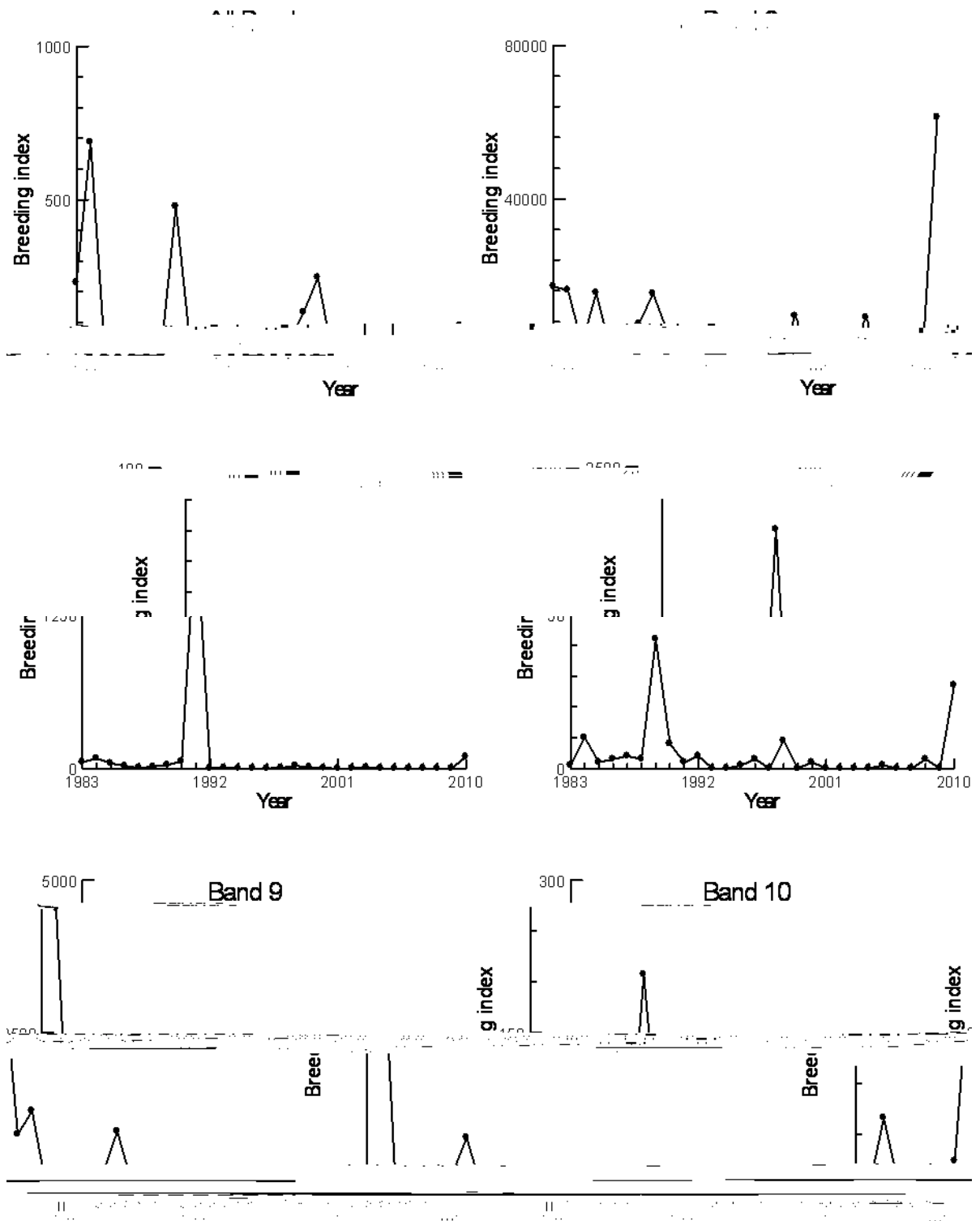
Scales vary on graph axes

Figure 7. Breeding index (all species) 1-5



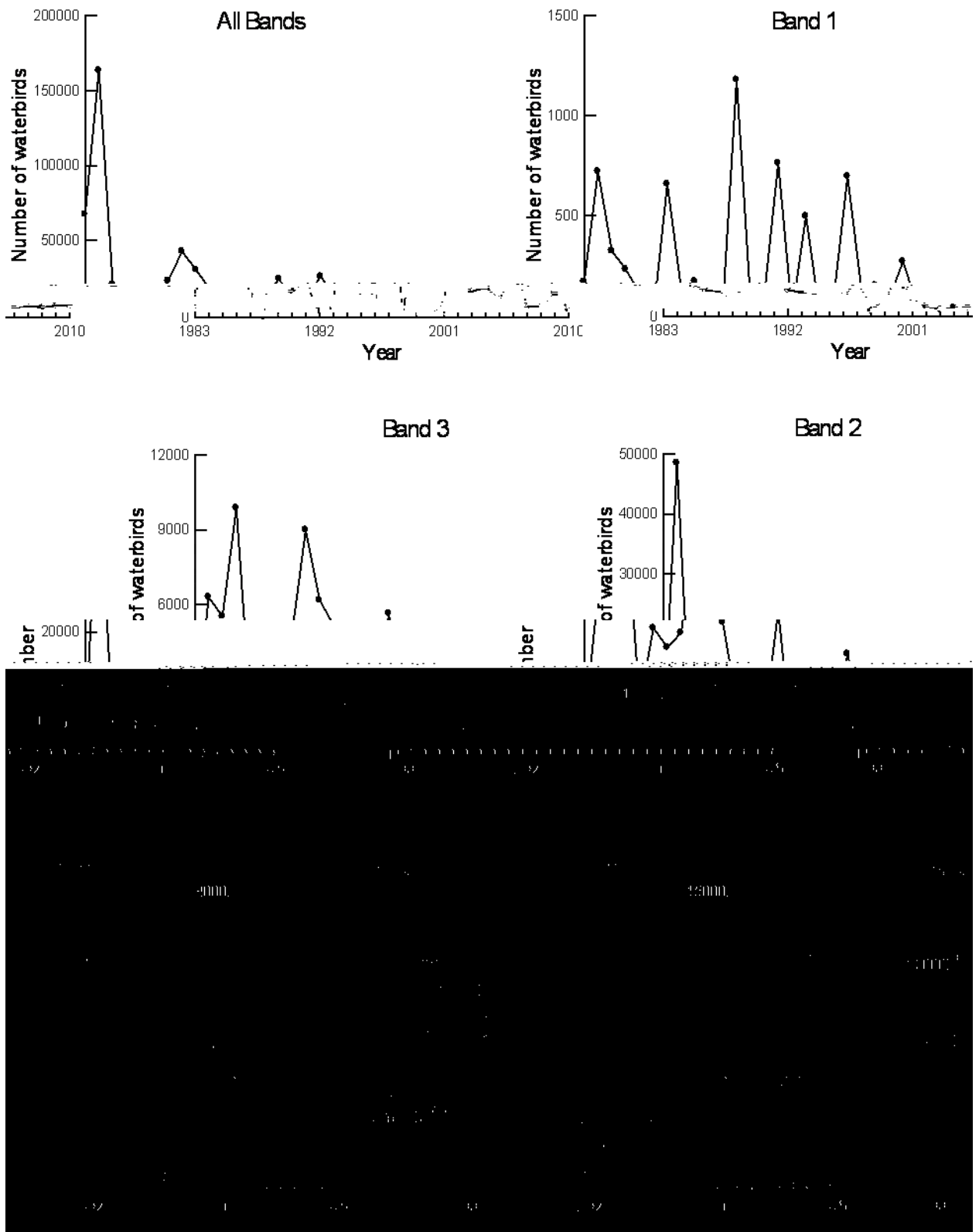
Scales vary on graphs

Figure 8. Breeding index 6-10



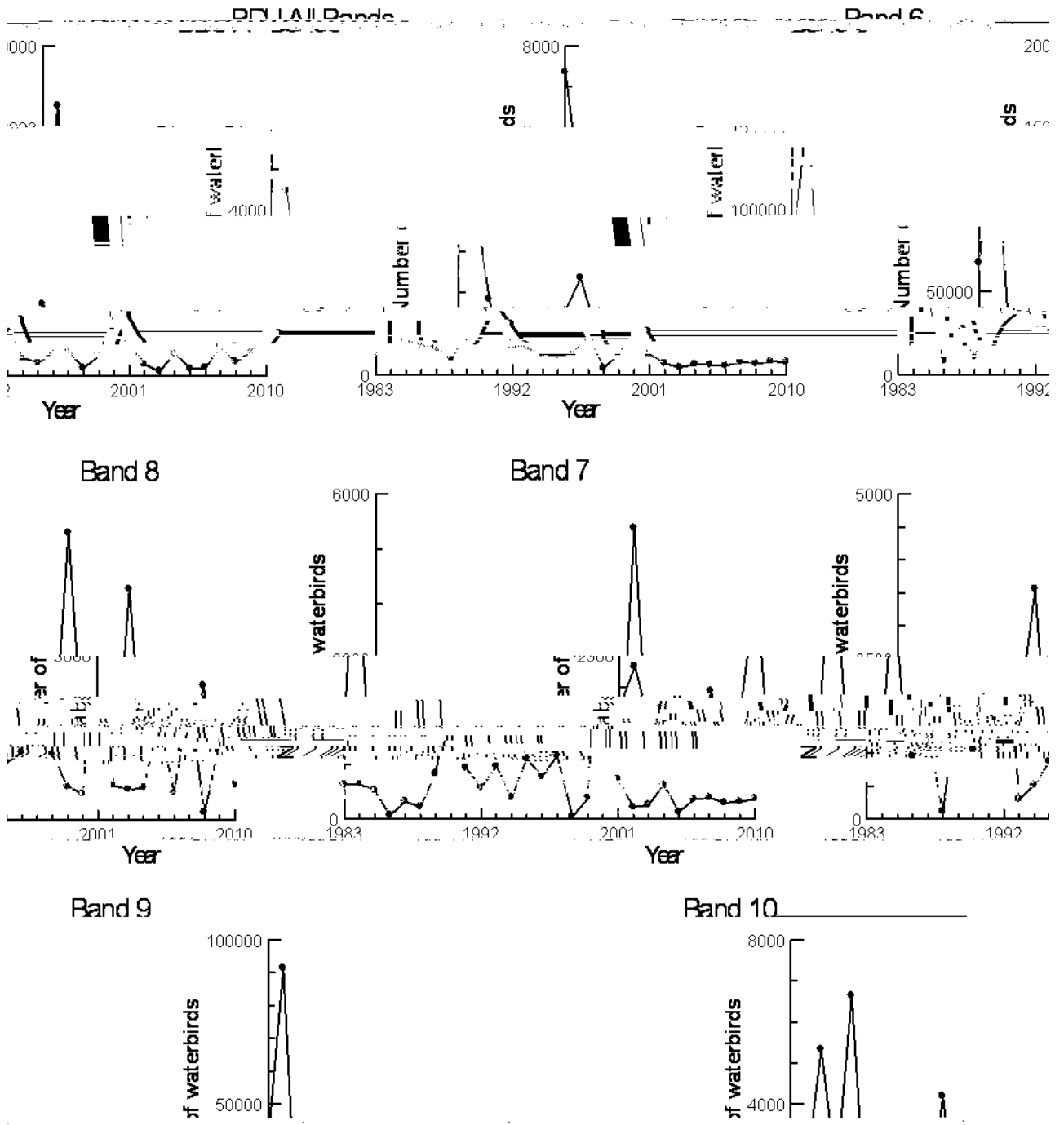
Scales vary on graphs

Figure 9. Pacific black duck 1-5



Scales vary on graphs

Figure 10. Pacific black duck 6-10



Scales vary on graphs

Figure 12. Black swan 6-10

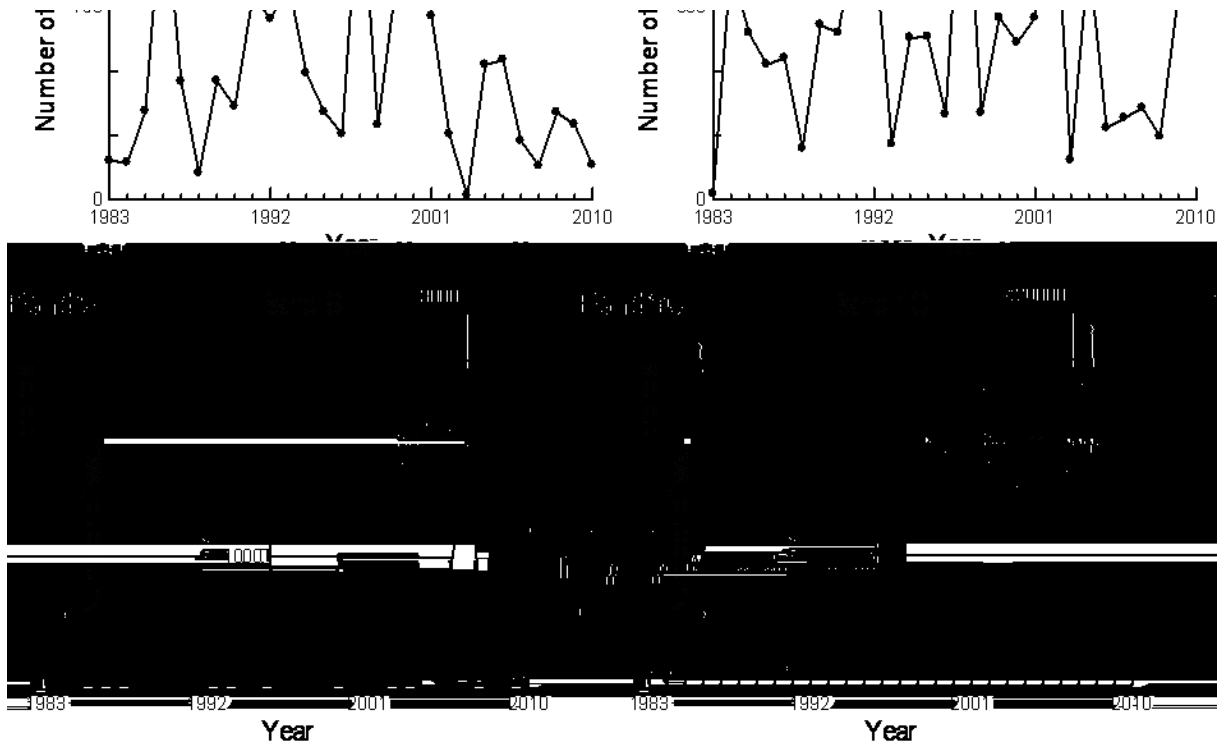
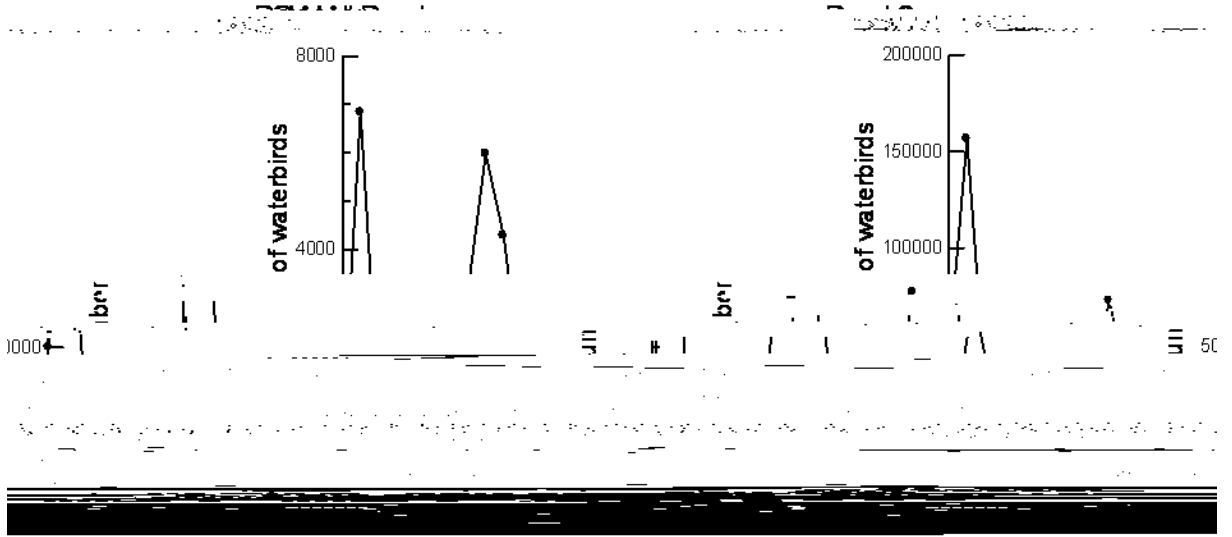
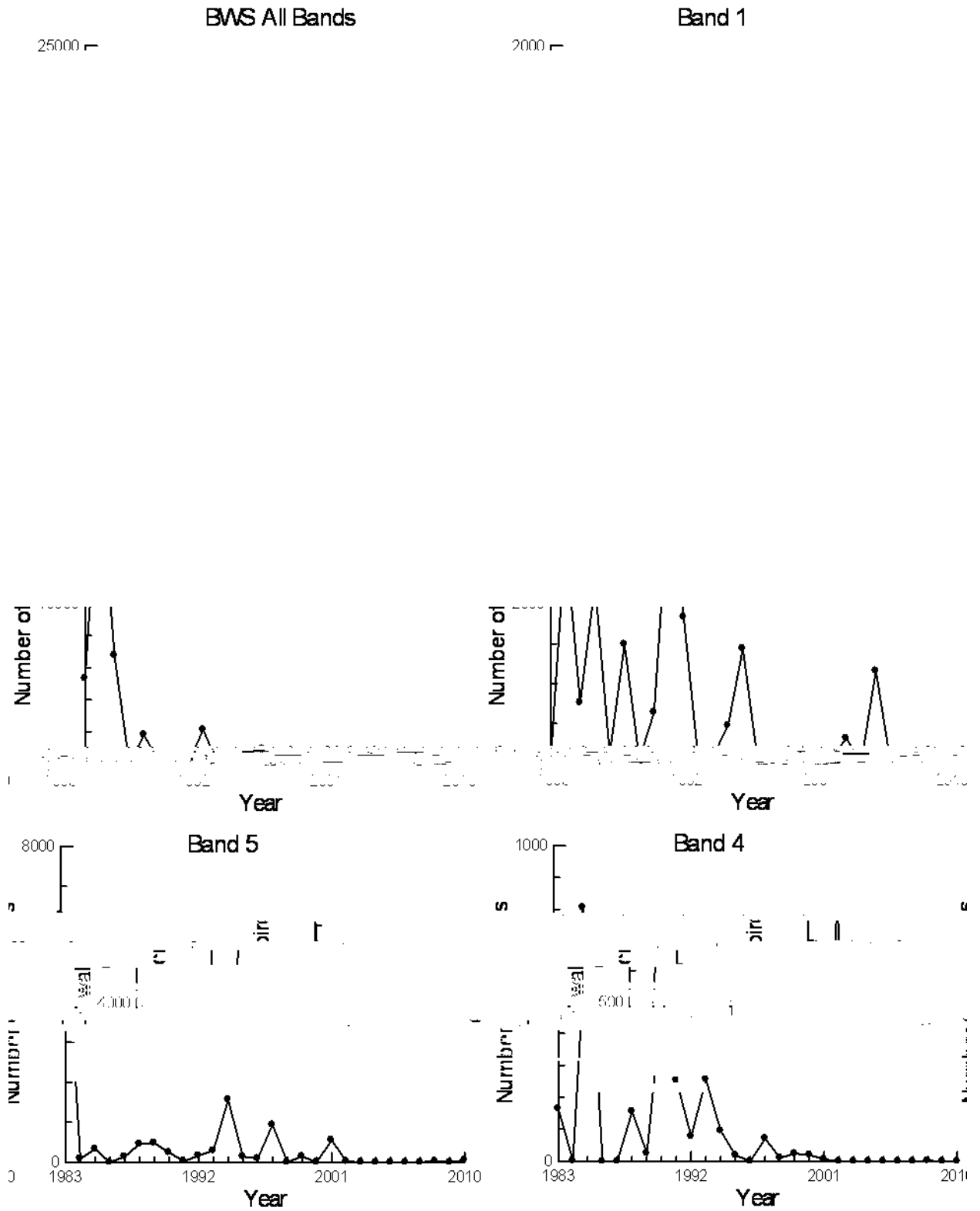
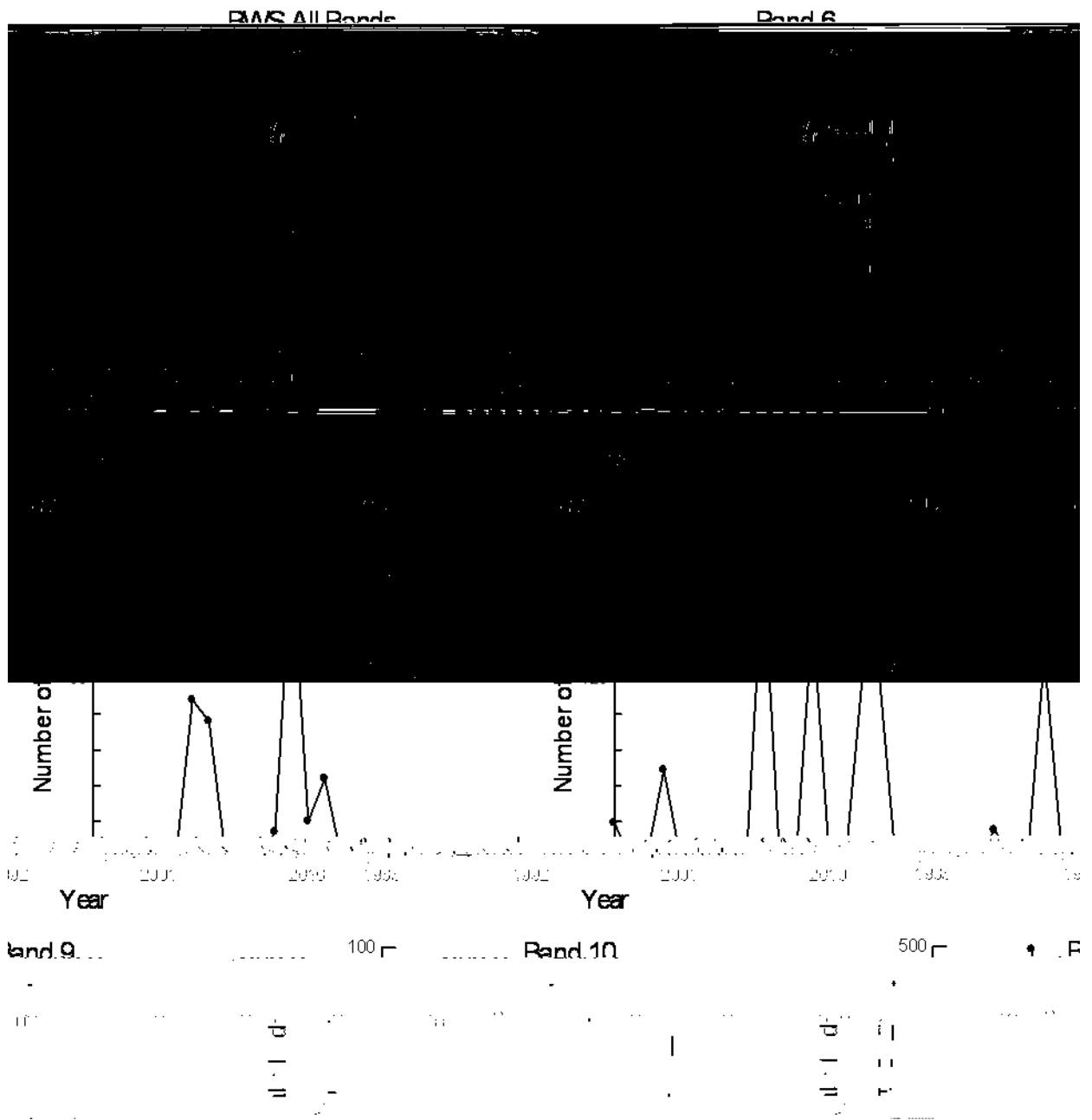


Figure 13. Australasian shoveler 1-5



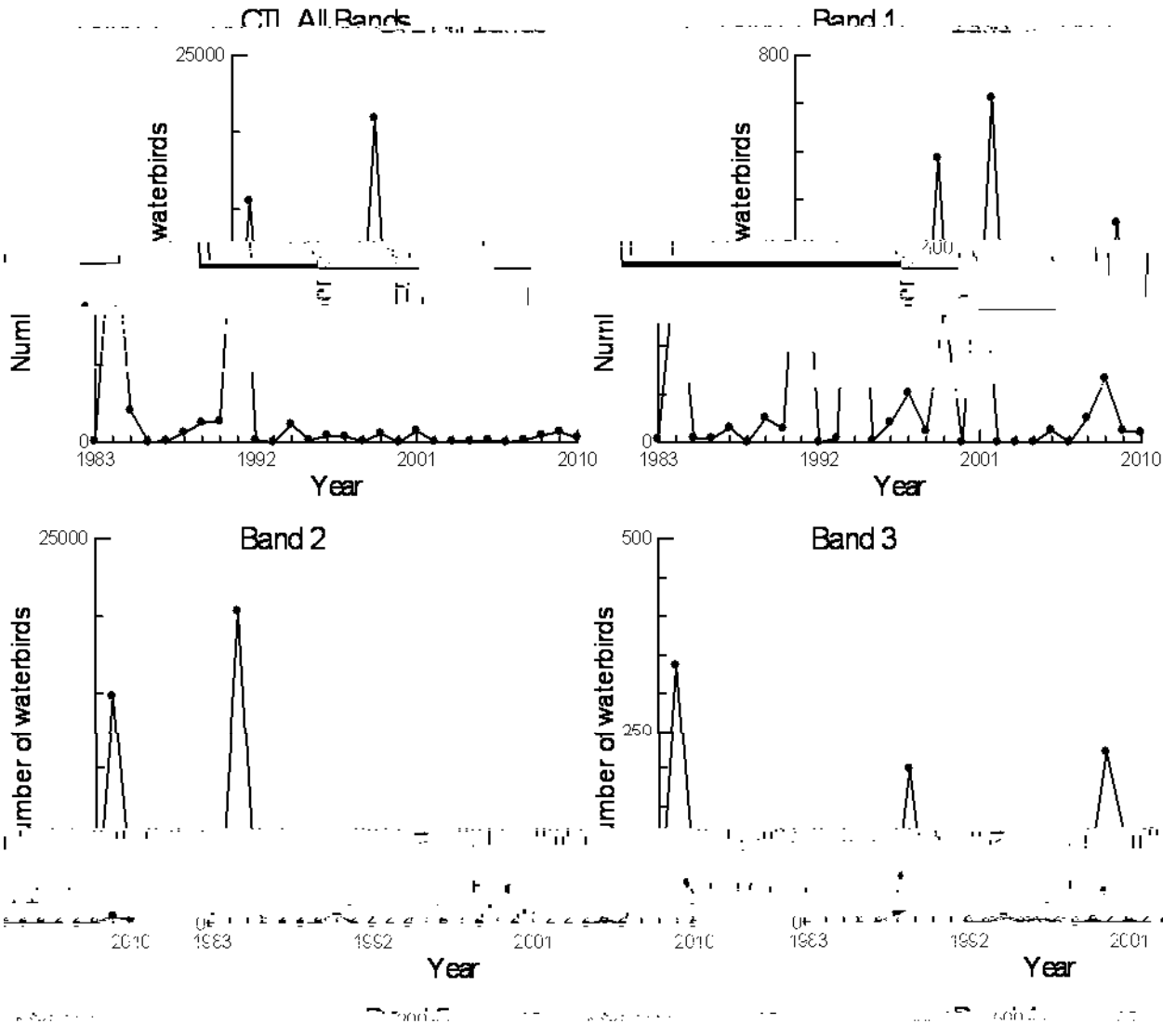
Scales vary on graphs

Figure 14. Australasian shoveler 6-10



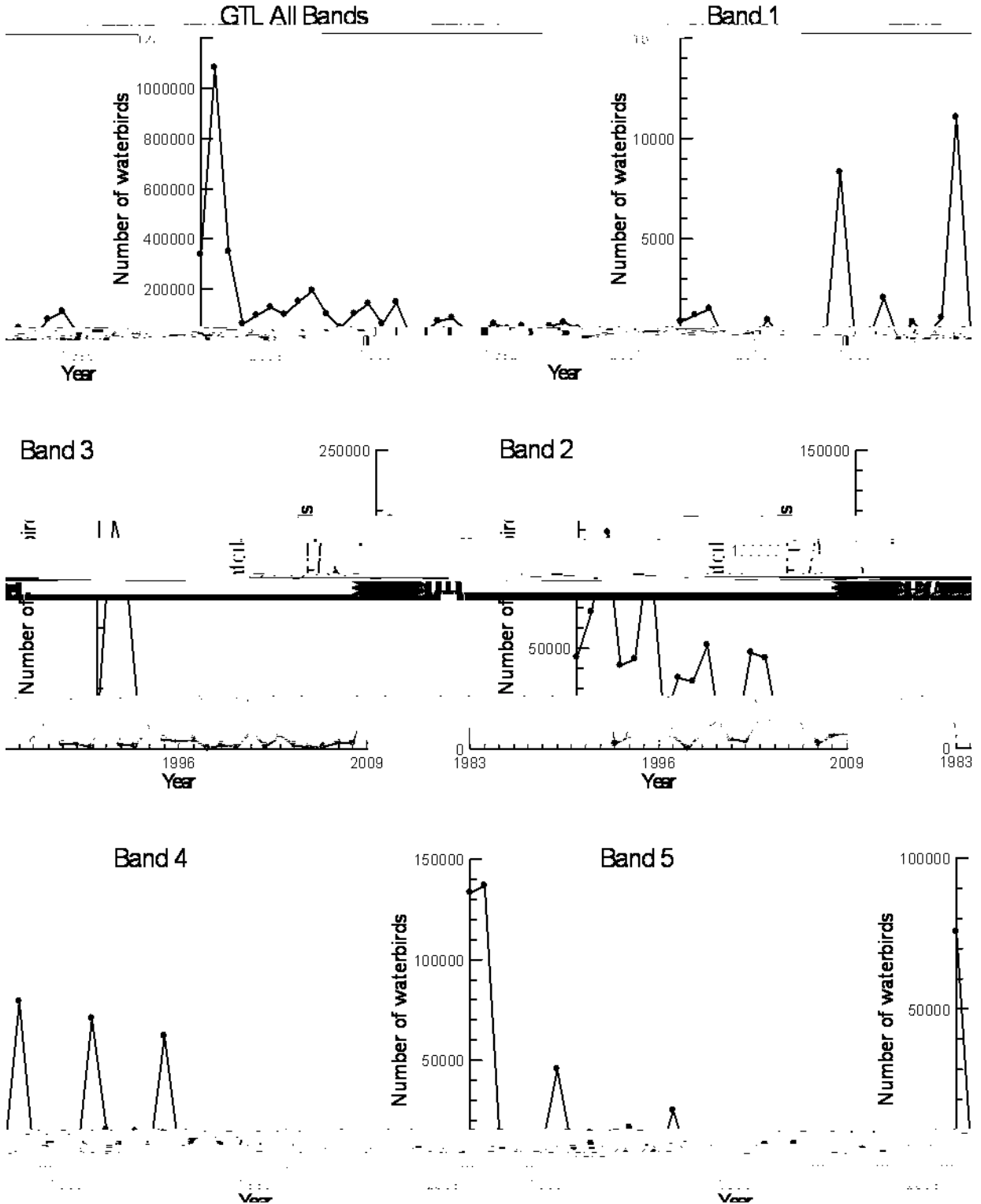
Scales vary on graphs

Figure 15. Chestnut teal 1-5



Scales vary on graphs

Figure 16. Grey teal 1-5



Scales vary on graphs

Figure 17. Grey teal 6-10

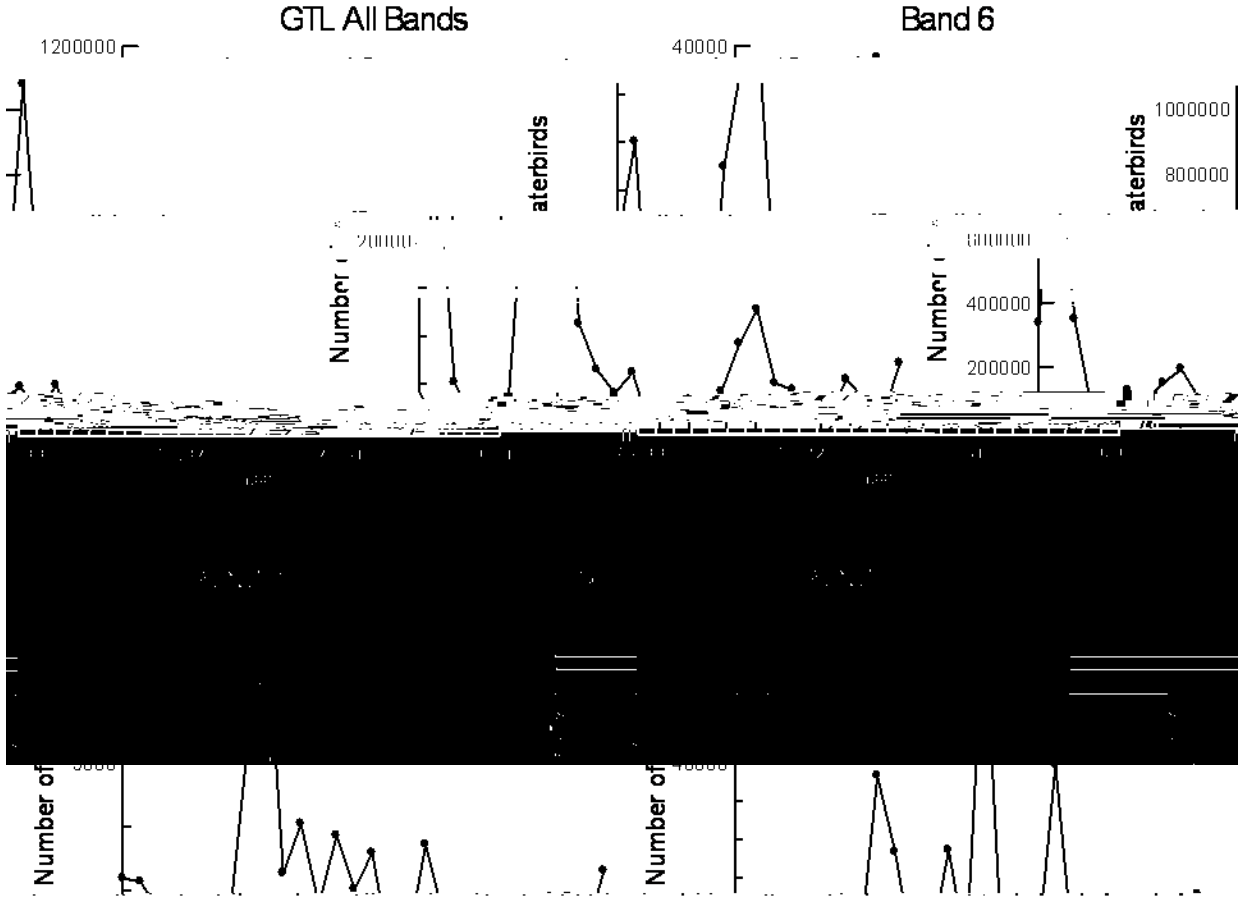
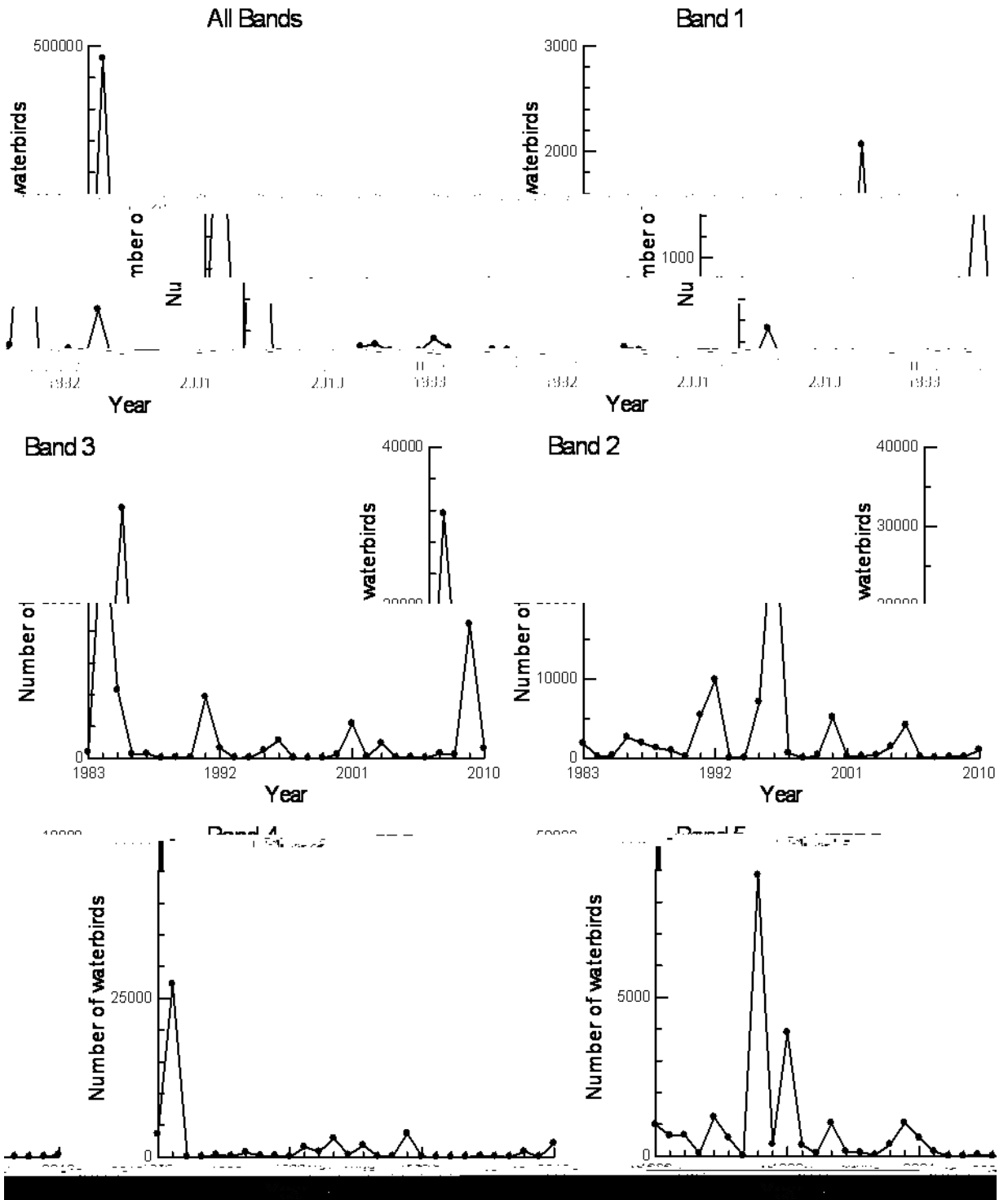
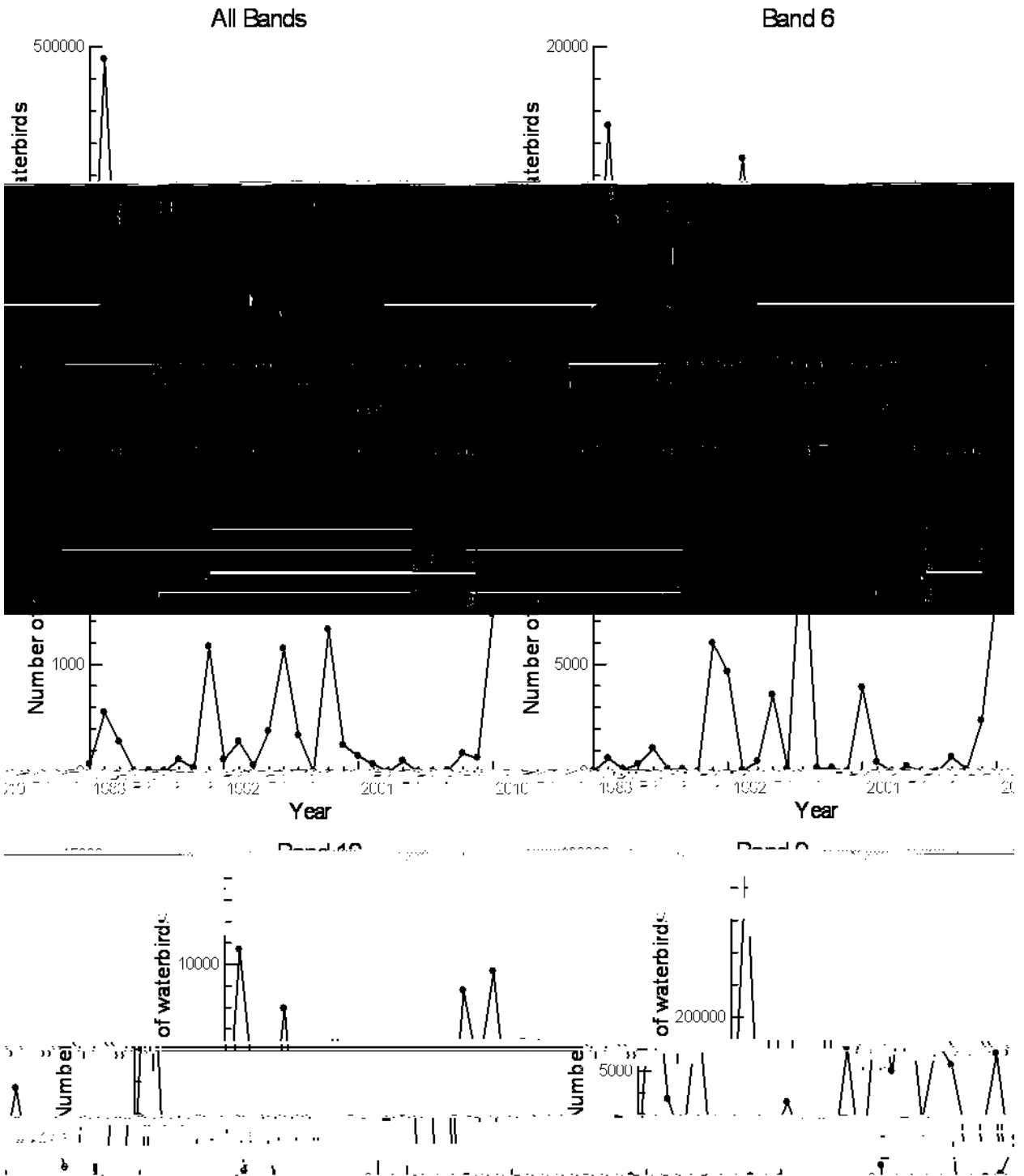


Figure 18. Hardhead 1-5



Scales vary on graphs

Figure 19. Hardhead 6-10



Scales vary on graphs

Figure 20. Freckled duck 1-5

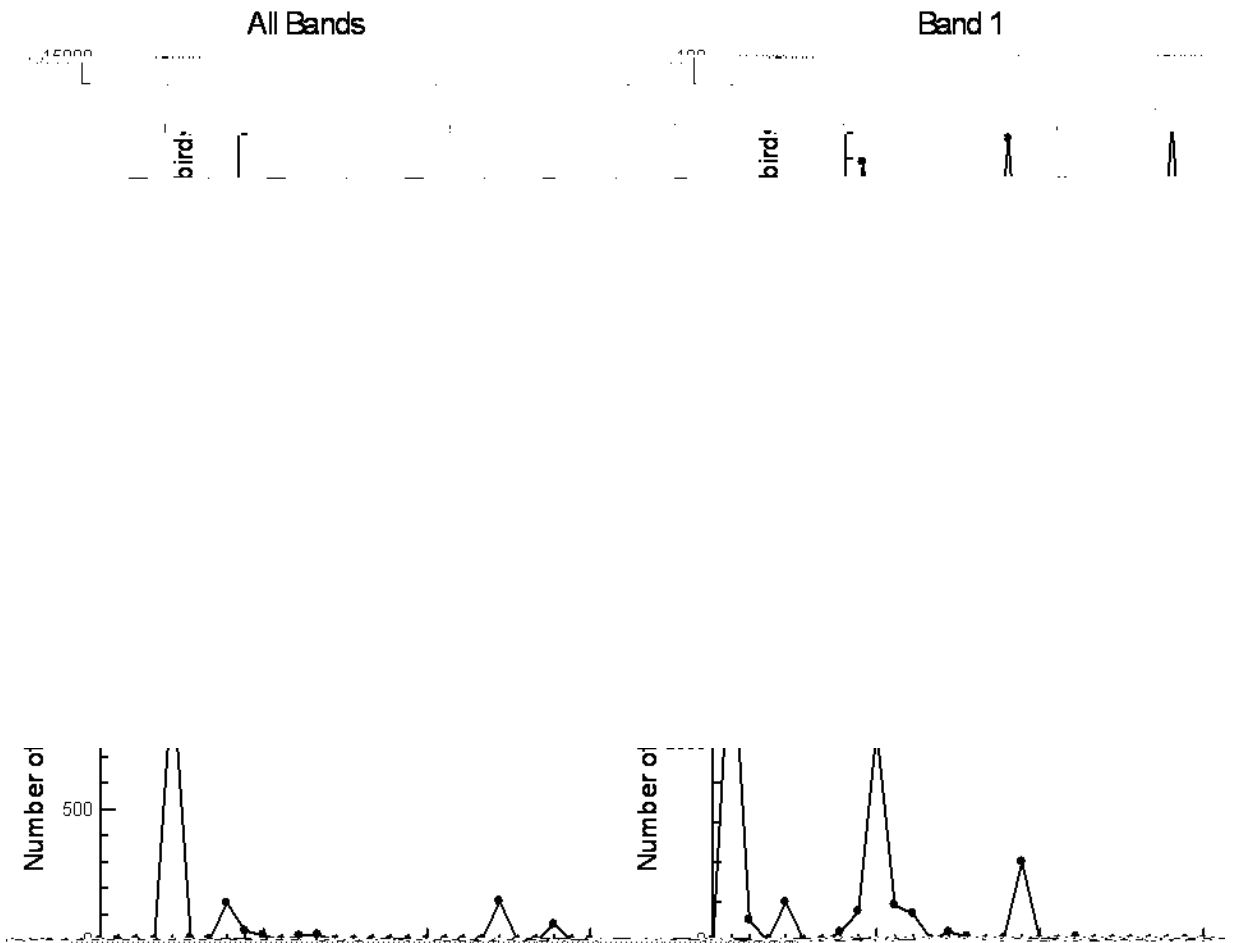
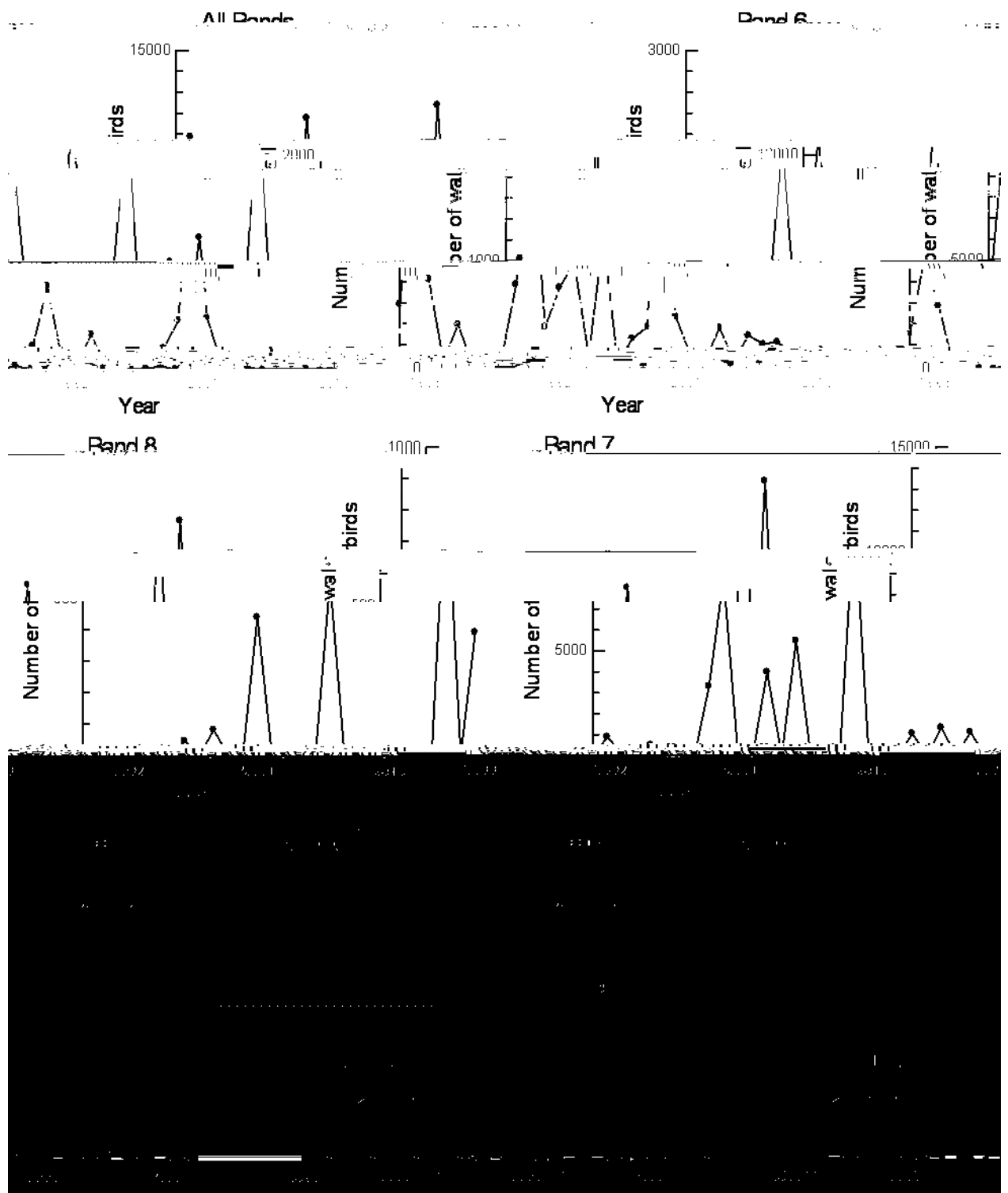


Figure 21. Freckled duck 6-10



Scales vary on graphs

Figure 22. Australian shelduck 1-5

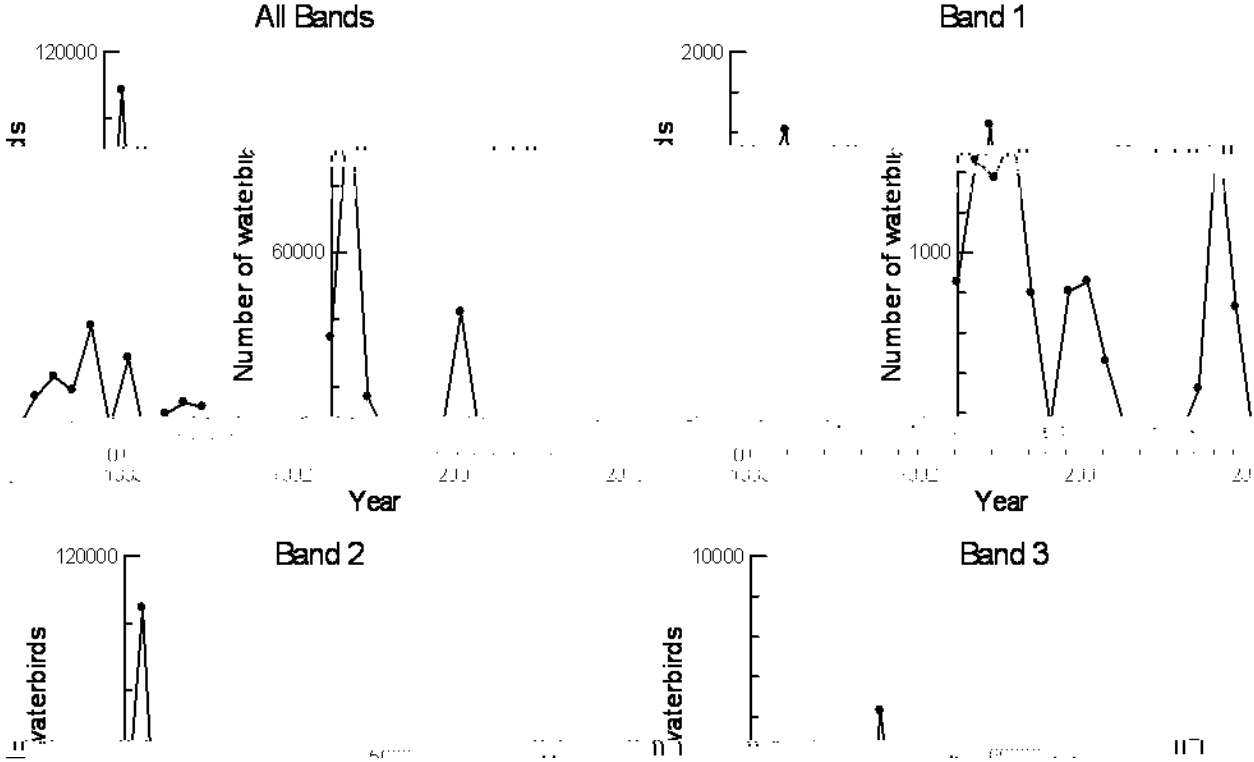
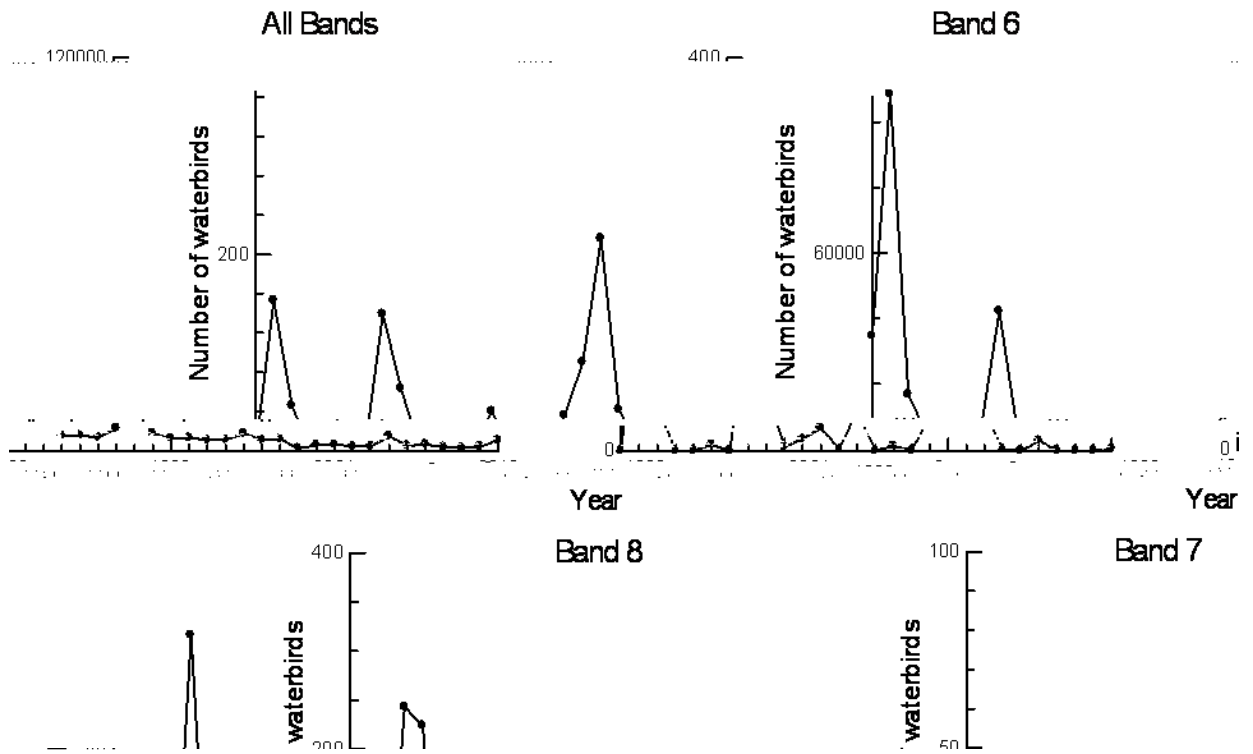


Figure 23. Australian shelduck 6-10



Scales vary on graphs

Figure 24. Pink-eared duck 1-5

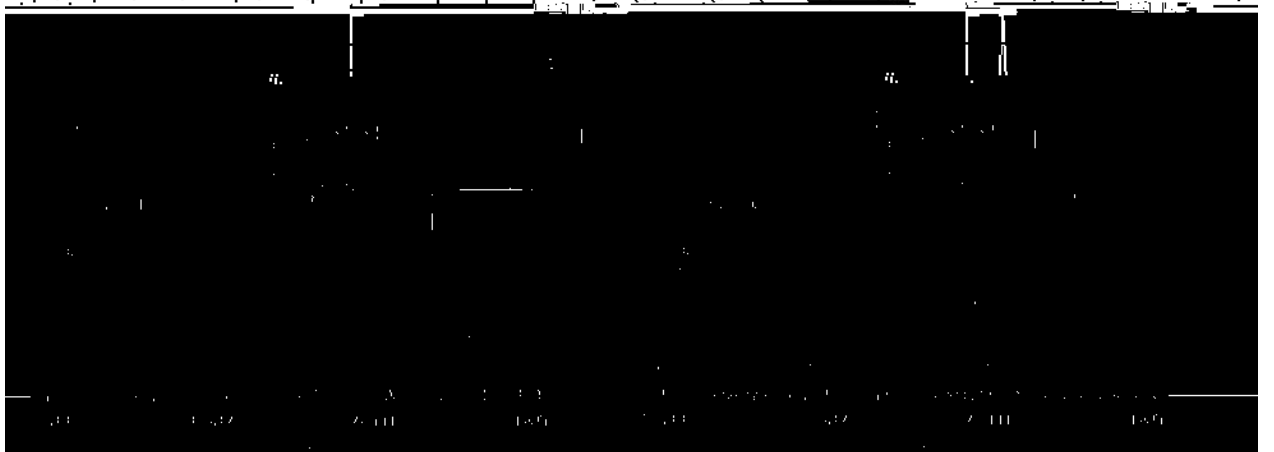
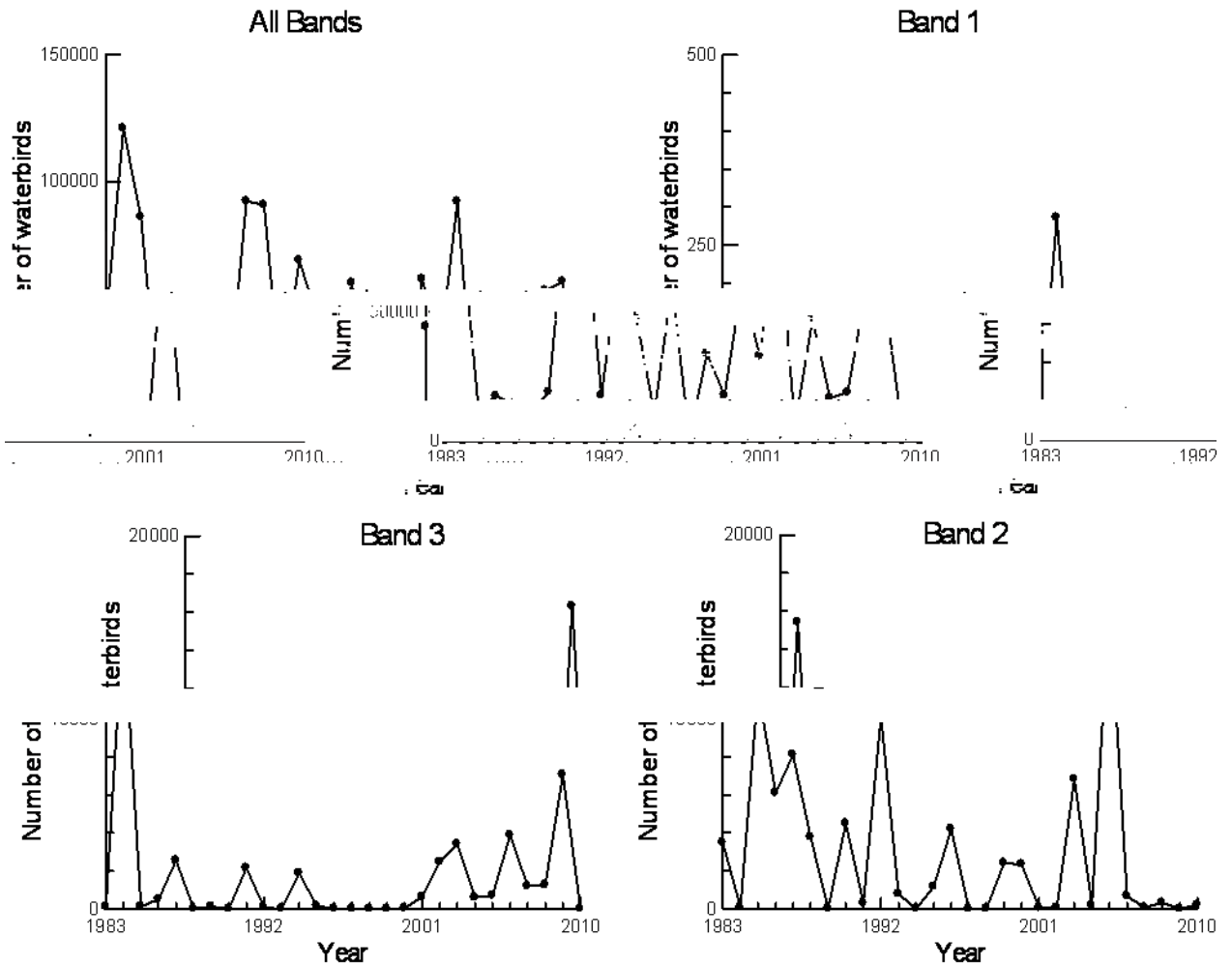
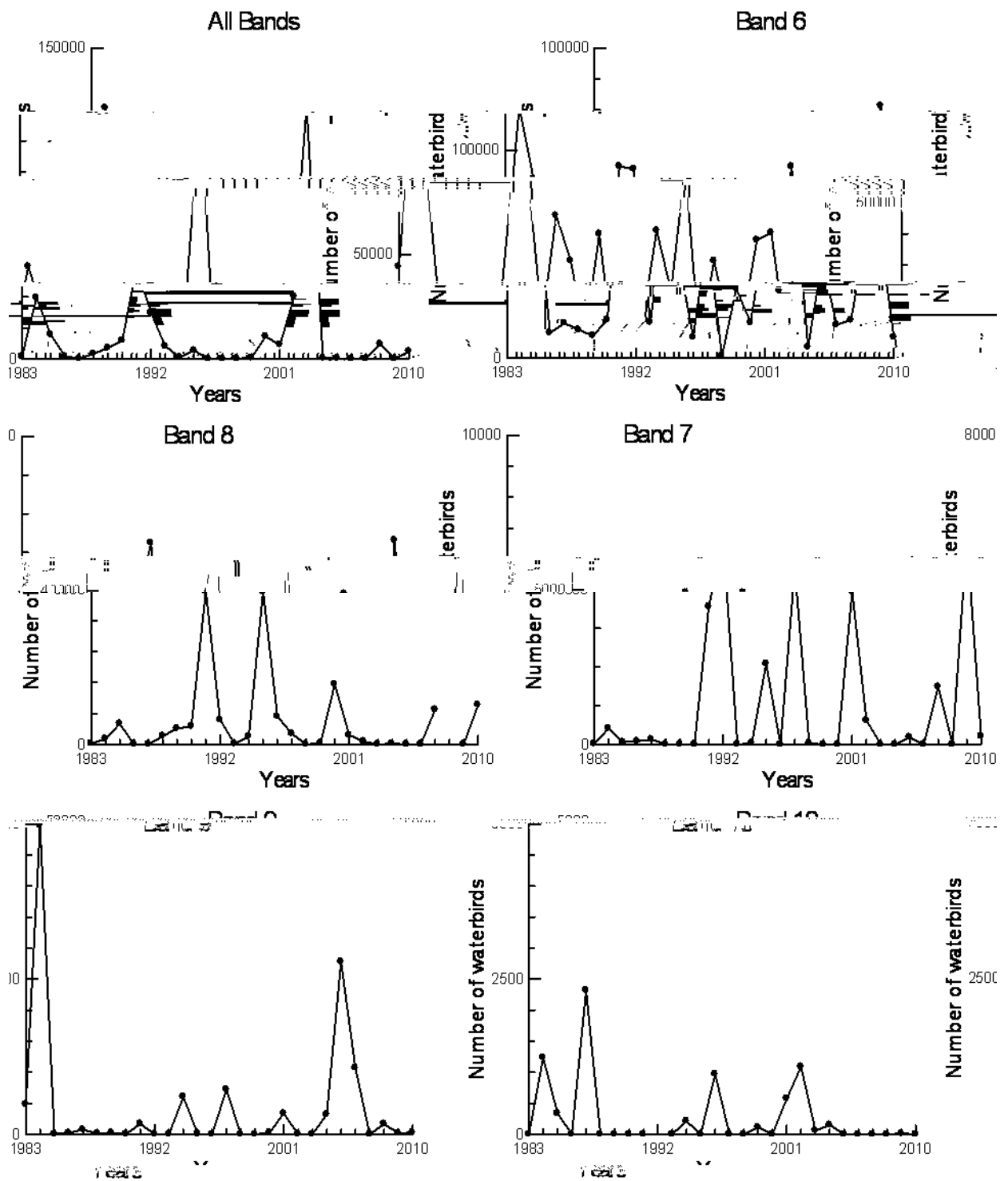
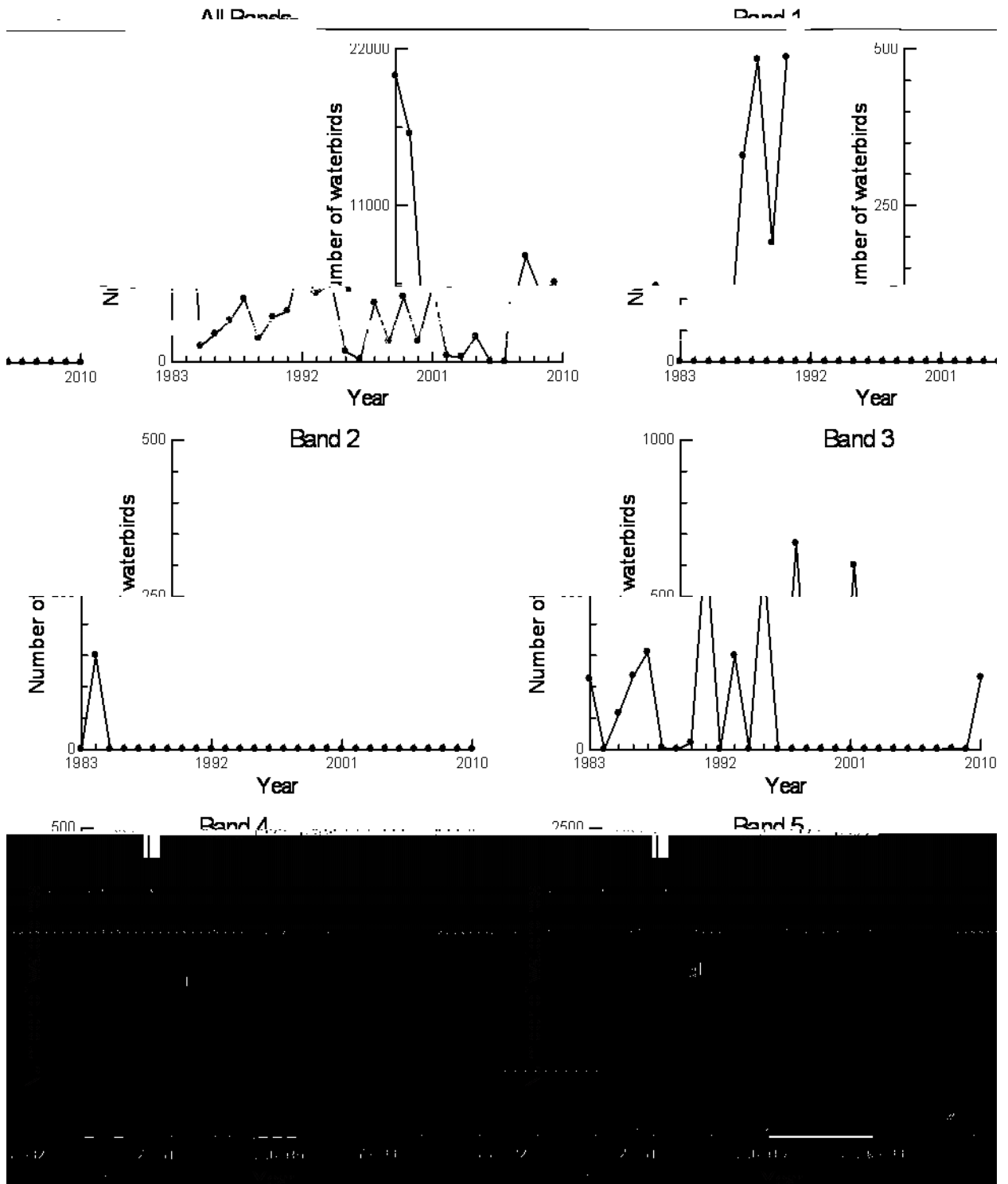


Figure 25. Pink-eared duck 6-10



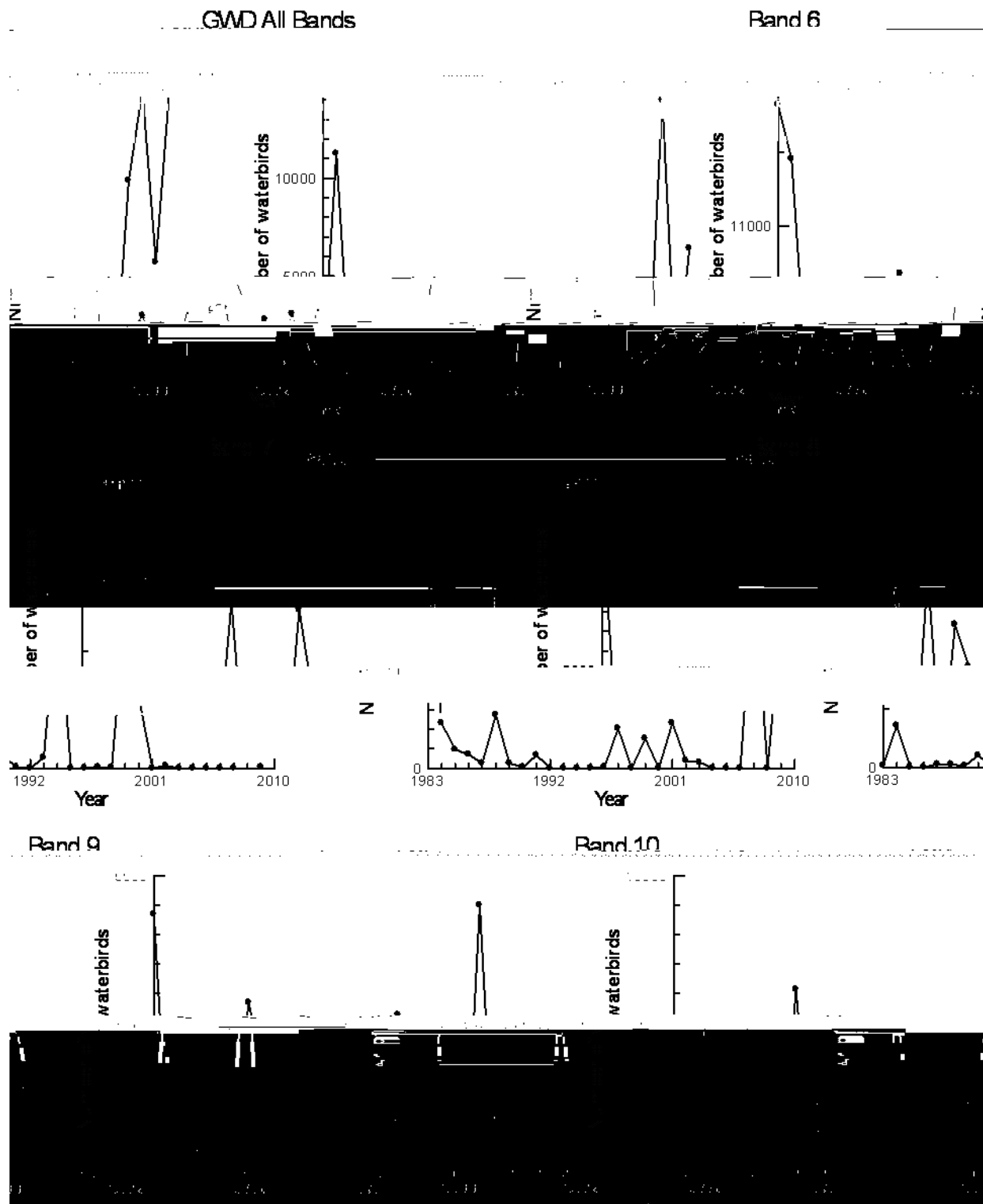
Scales vary on graphs

Figure 26. Plumed whistling-duck 1-5



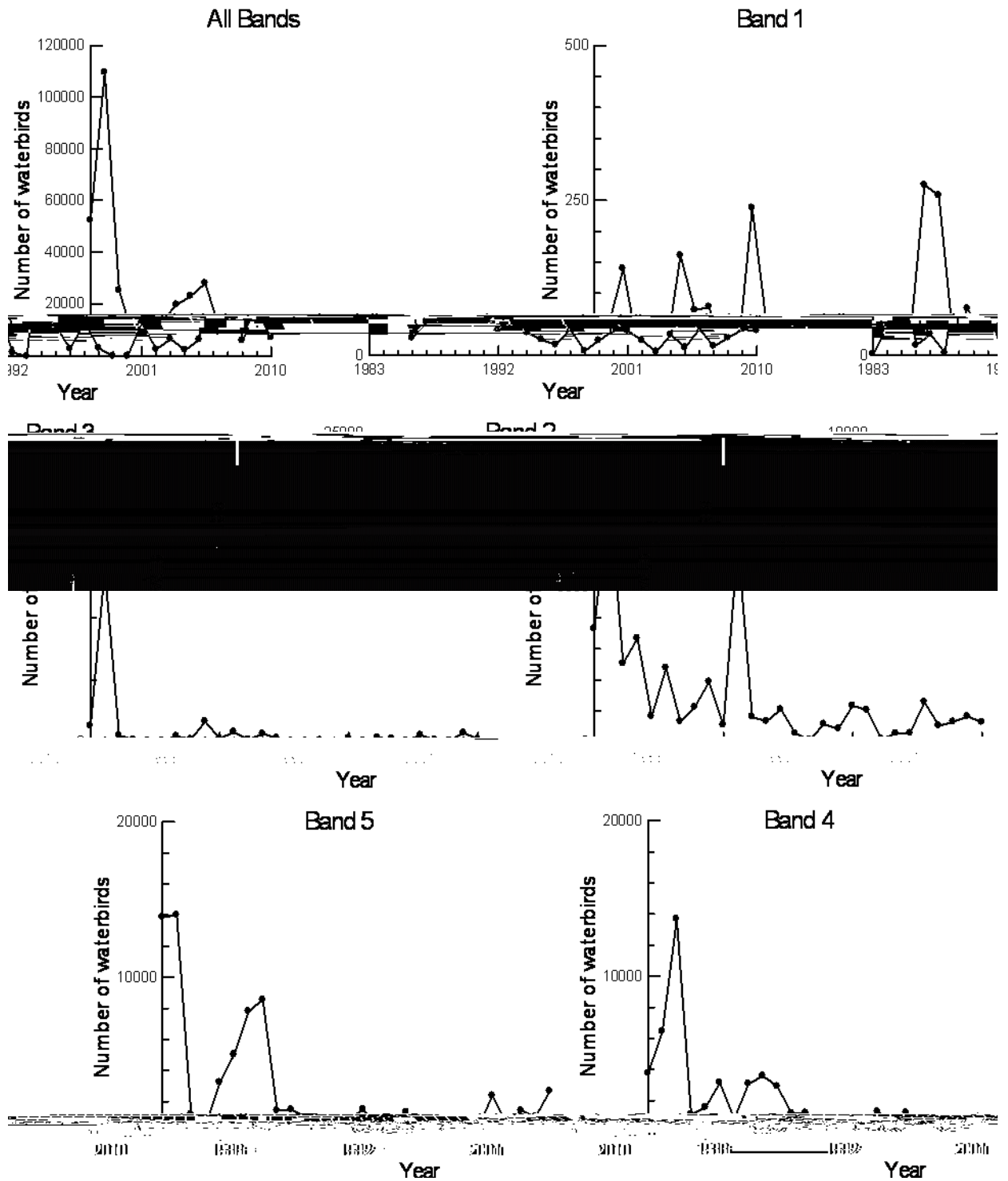
Scales vary on graphs

Figure 27. Plumed whistling-duck 6-10



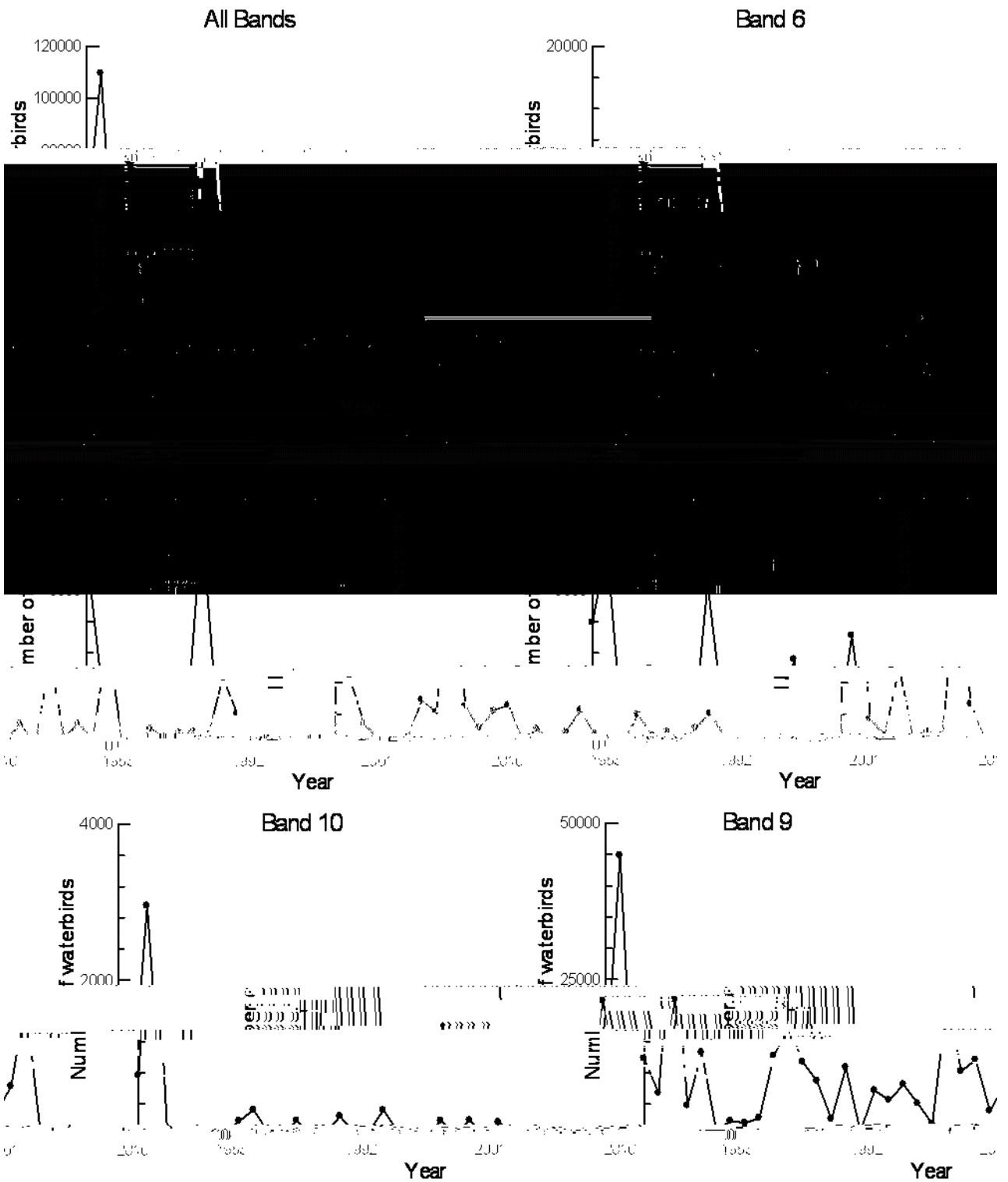
Scales vary on graphs

Figure 28. Australian wood duck 1-5



Scales vary on graphs

Figure 29. Australian wood duck 6-10



Scales vary on graphs